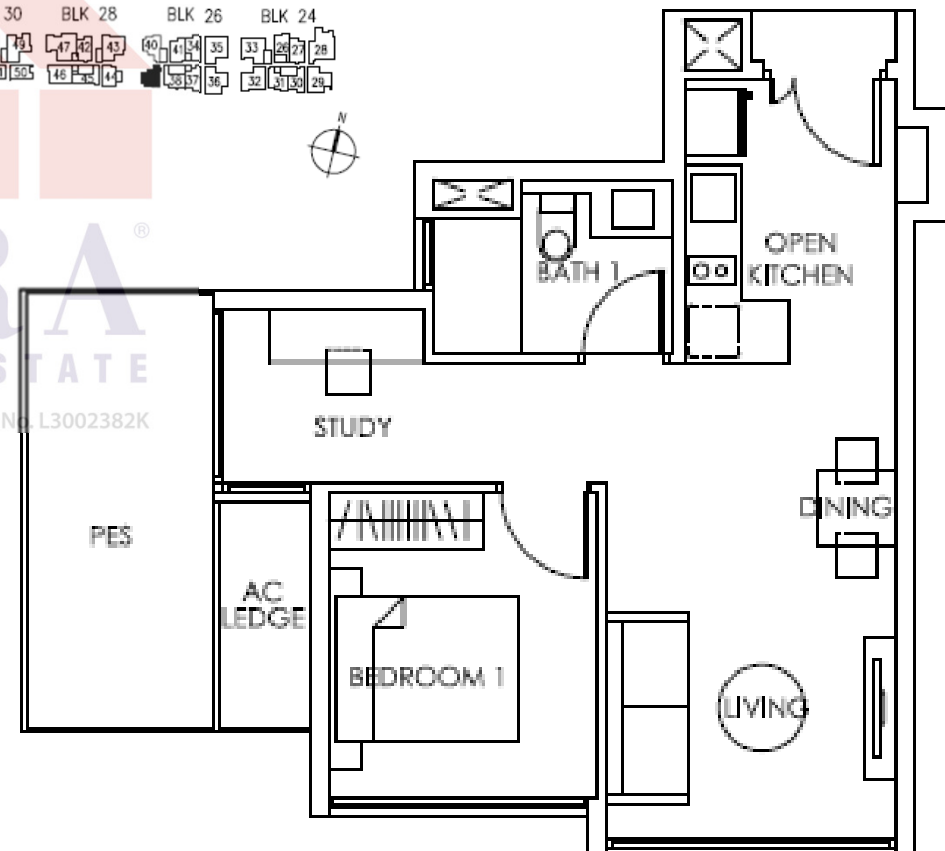
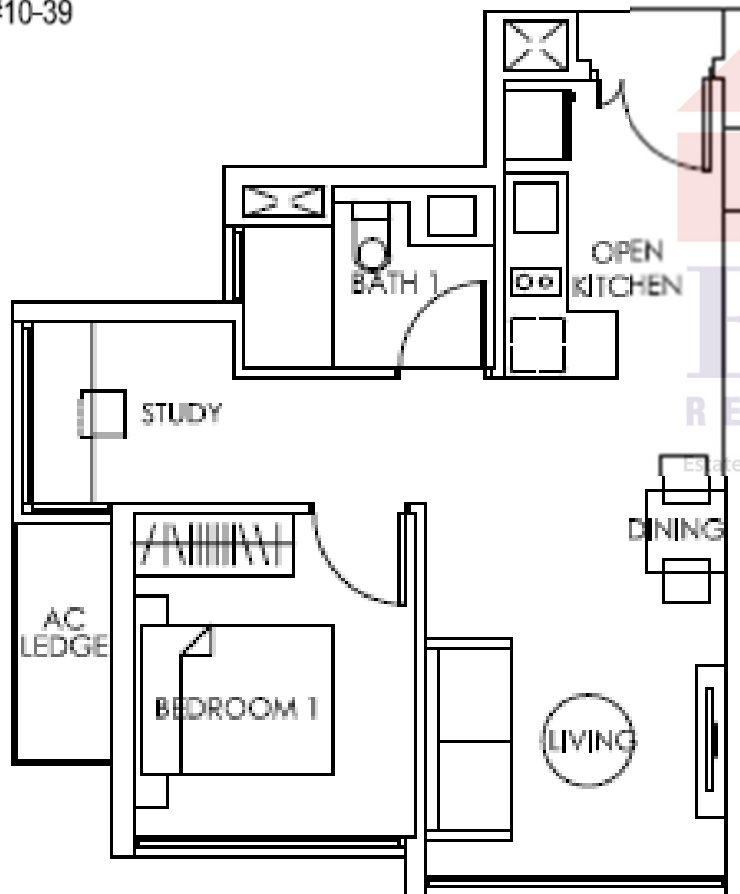


**Type A1 (S)** 48 sqm / 517 sqf

**Type A1 (S) (P)** 57 sqm / 614 sqf

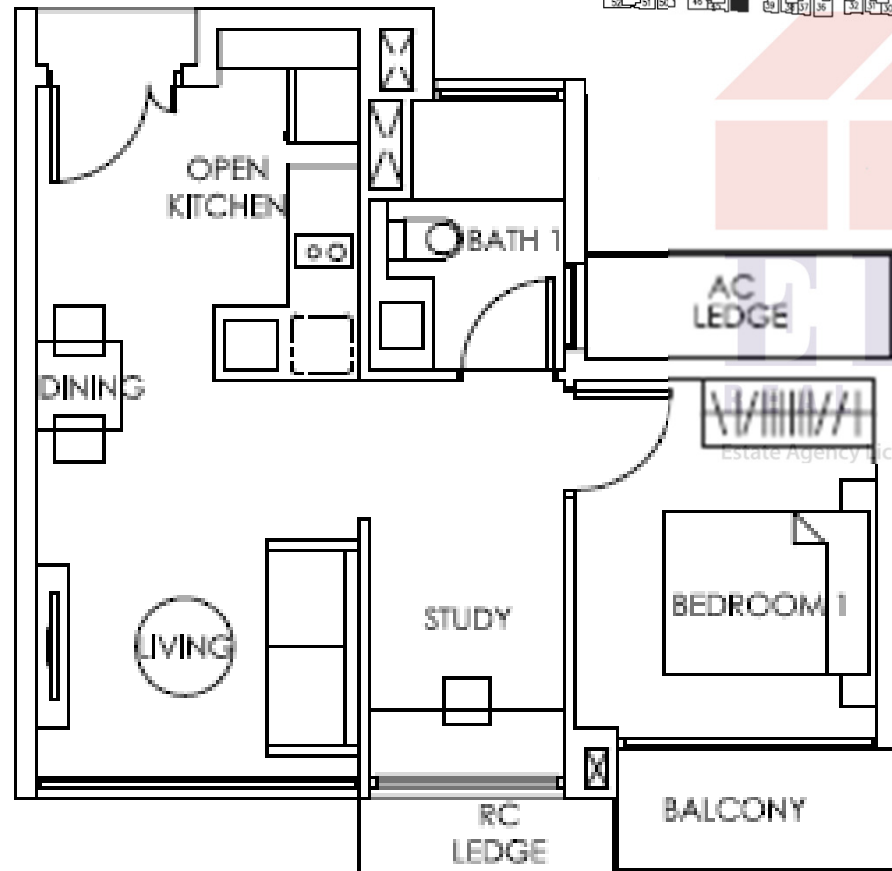
- #06-39    #11-39
- #07-39    #12-39
- #08-39    #13-39
- #09-39    #14-39
- #10-39

#05-39



### Type A2 (S) 51 sqm / 571 sqf

- #07-44
- #09-44
- #11-44
- #13-44



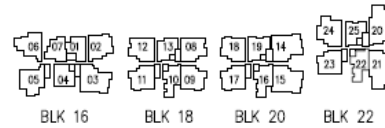
### Type A2a (S) 55 sqm / 592 sqf

- #06-44
- #08-44
- #10-44
- #12-44



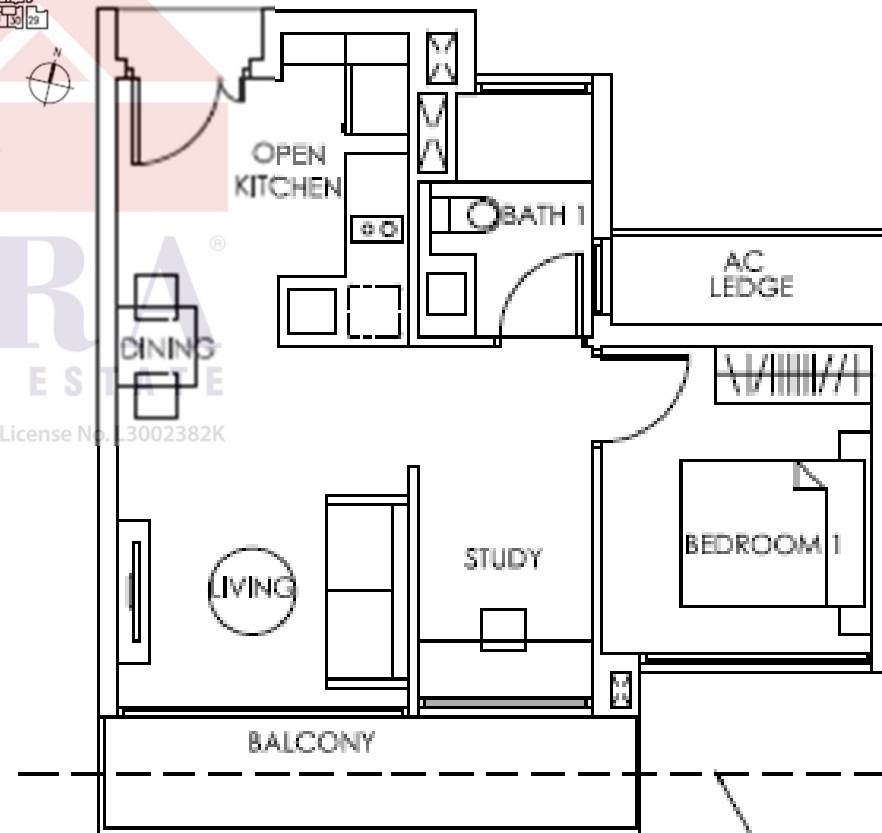
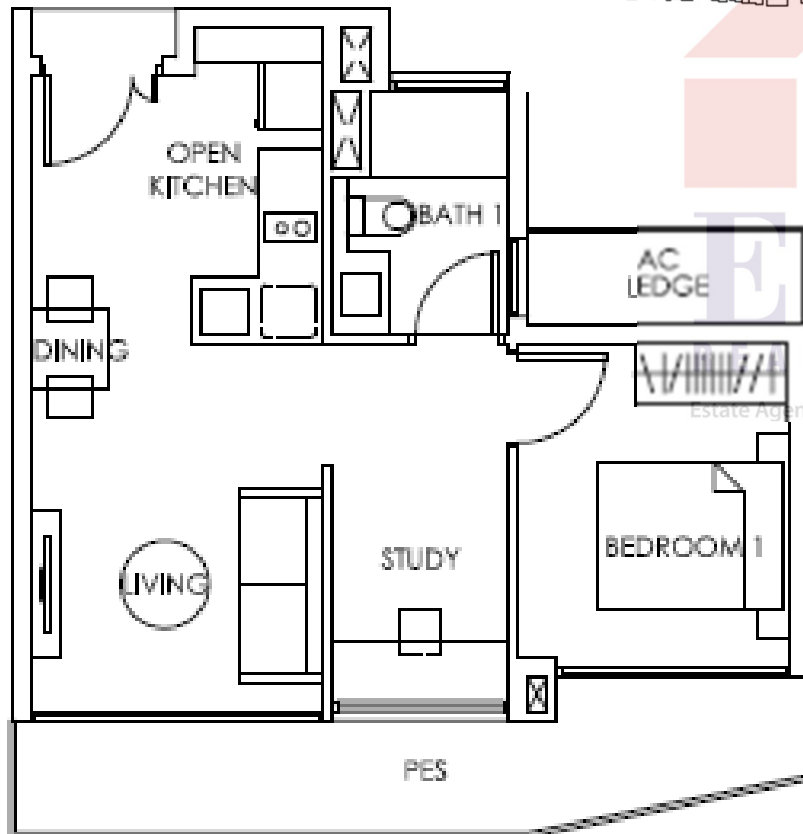
**Type A2 (S)(P) 58 sqm / 624 sqf**

#05-44



**Type A2a (S)(T) 55 sqm / 592 sqf**

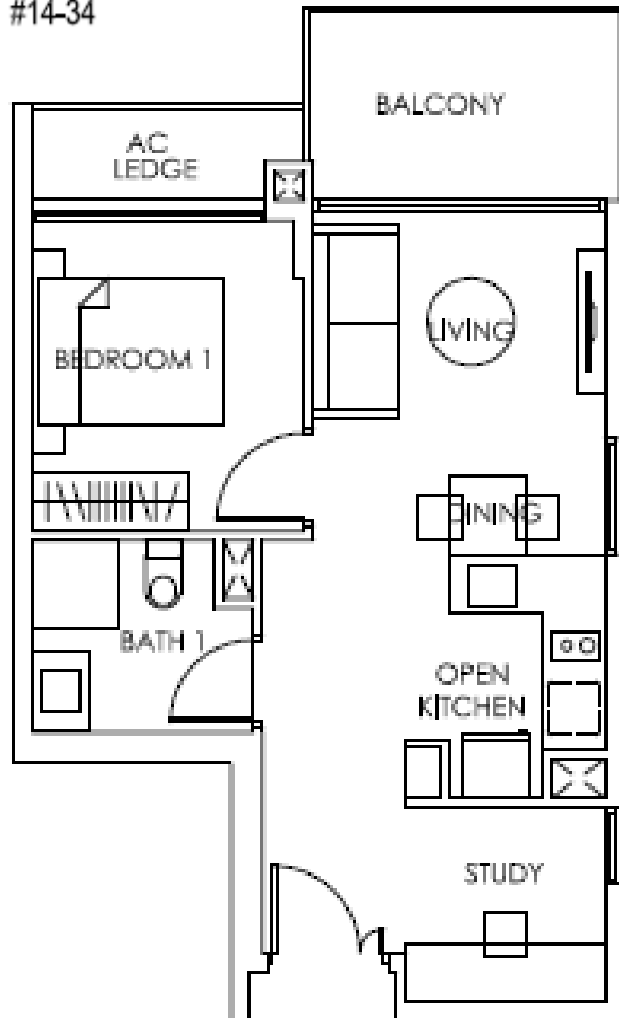
#14-44



PROFILE OF FLOOR ABOVE

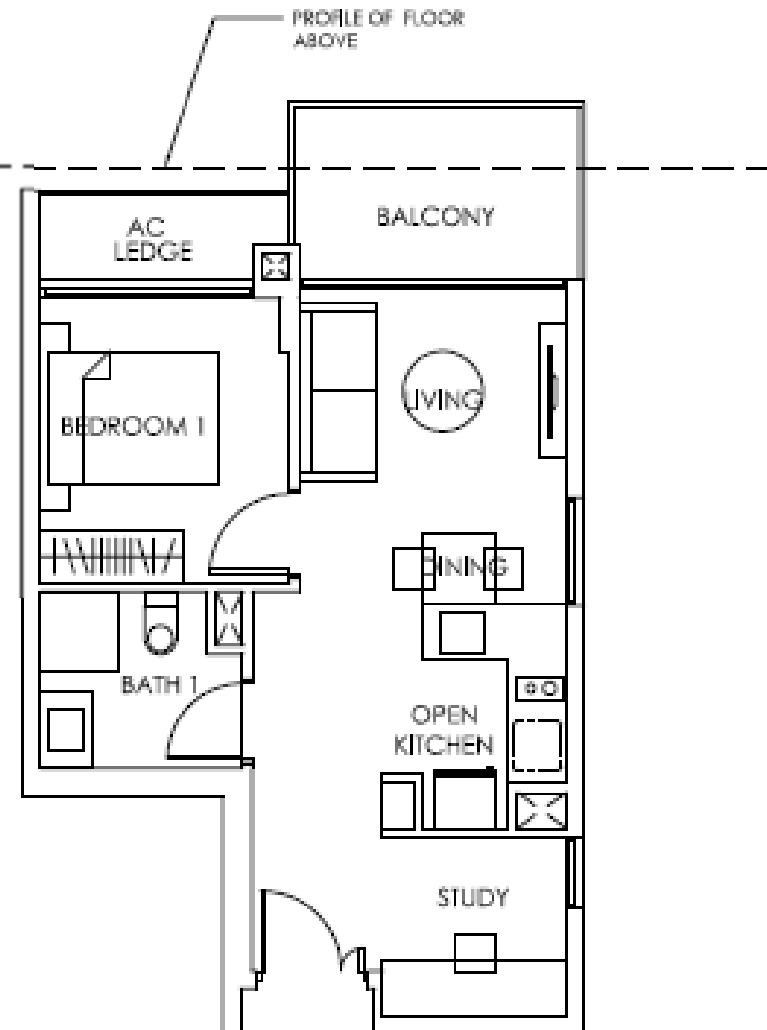
**Type A3 (S) 53 sqm / 571 sqf**

#13-34 #13-48  
#14-34



**Type A3a (S)(T) 53 sqm / 571 sqf**

#14-48

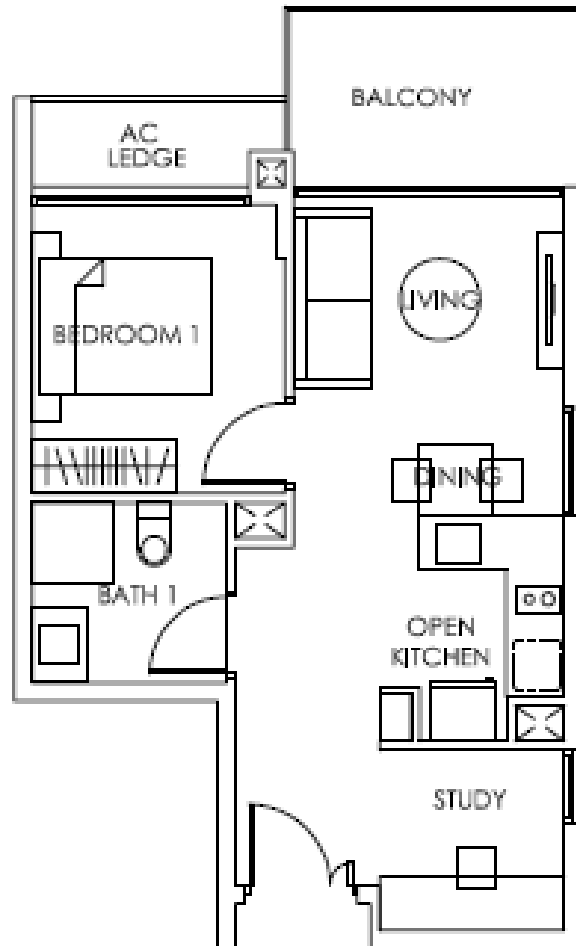


All plans are subjected to amendments as may be

;. Floor areas are approximate and subject to final survey.

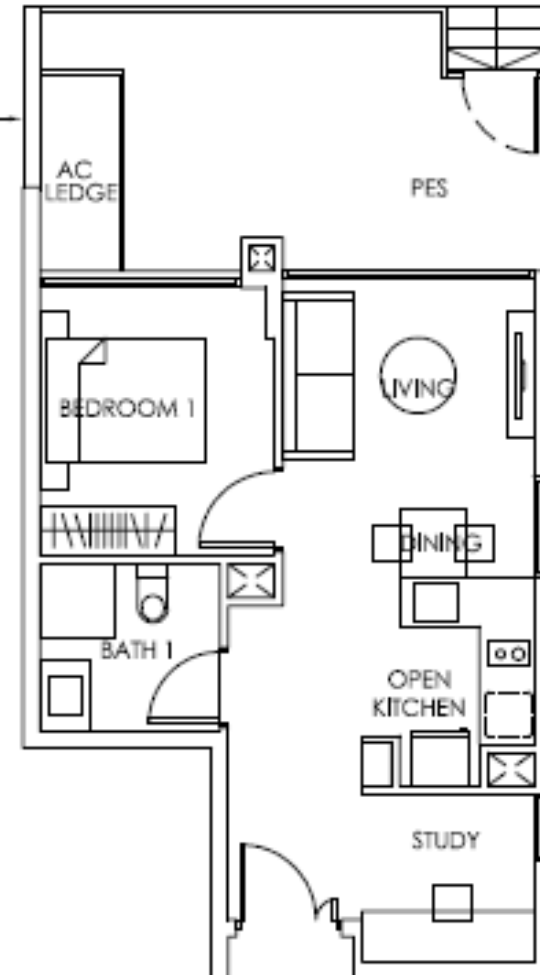
### Type A3a (S) 54 sqm / 581 sqf

#06-34 #10-34 #06-48 #10-48  
 #07-34 #11-34 #07-48 #11-48  
 #08-34 #12-34 #08-48 #12-48  
 #09-34 #09-48

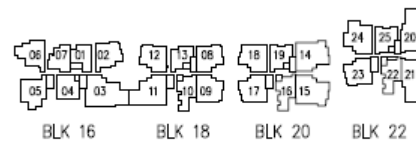


### Type A3a (S)(P) 63 sqm / 678 sqf

#05-34 #05-48



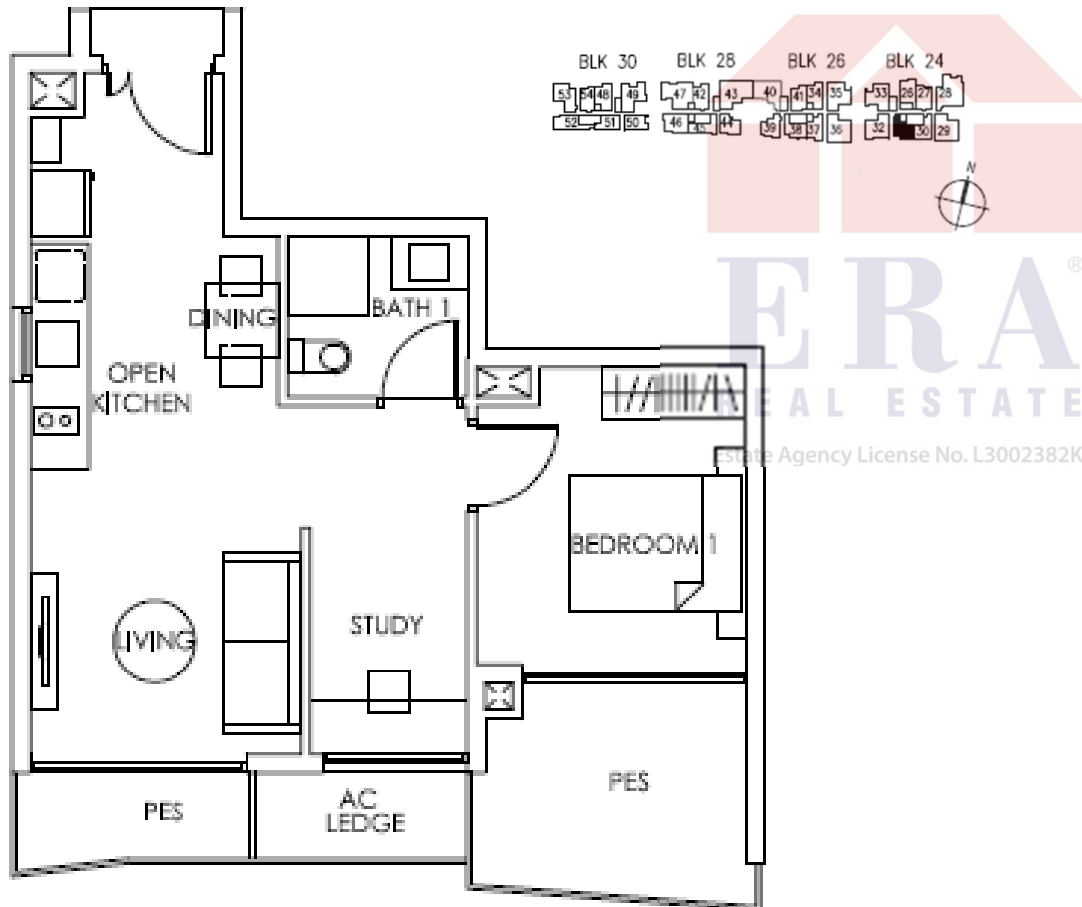
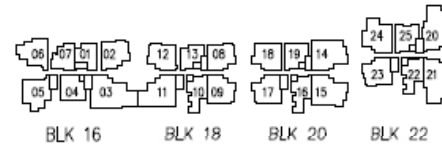
Estate Agency License No. L3002382K



All plans are subjected to amendments as may be approved by the relevant authorities. Floor areas are approximate and subject to final survey.

**Type A4a (S)(P) 59 sqm / 635 sqf**

#05-31



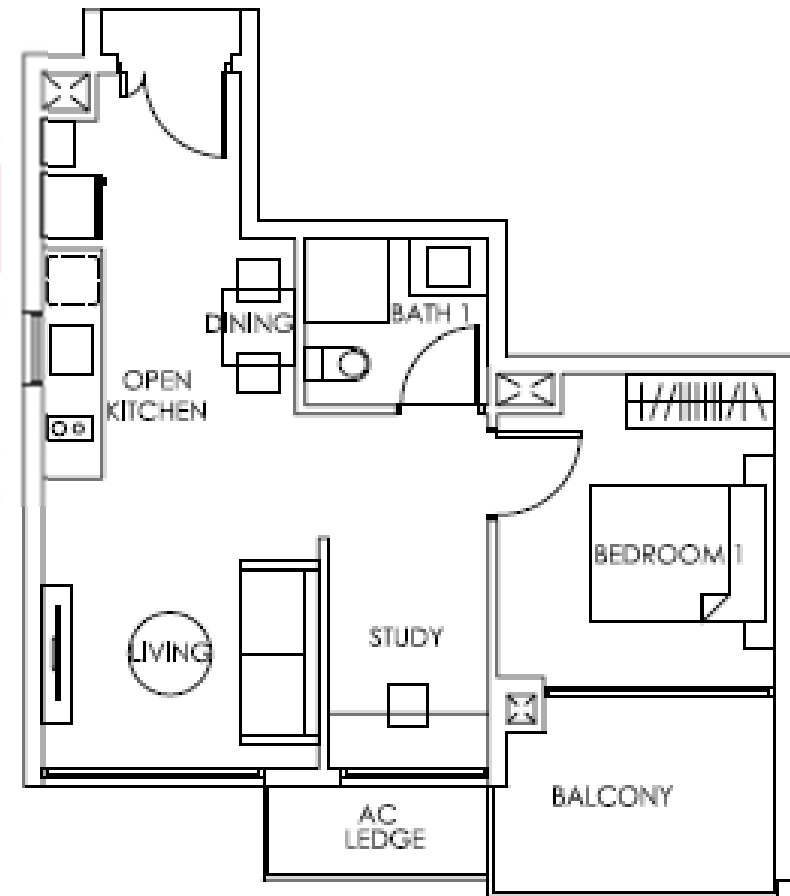
**Type A4a (S) 55 sqm / 592 sqf**

#06-31 #10-31

#07-31 #11-31

#08-31 #12-31

#09-31

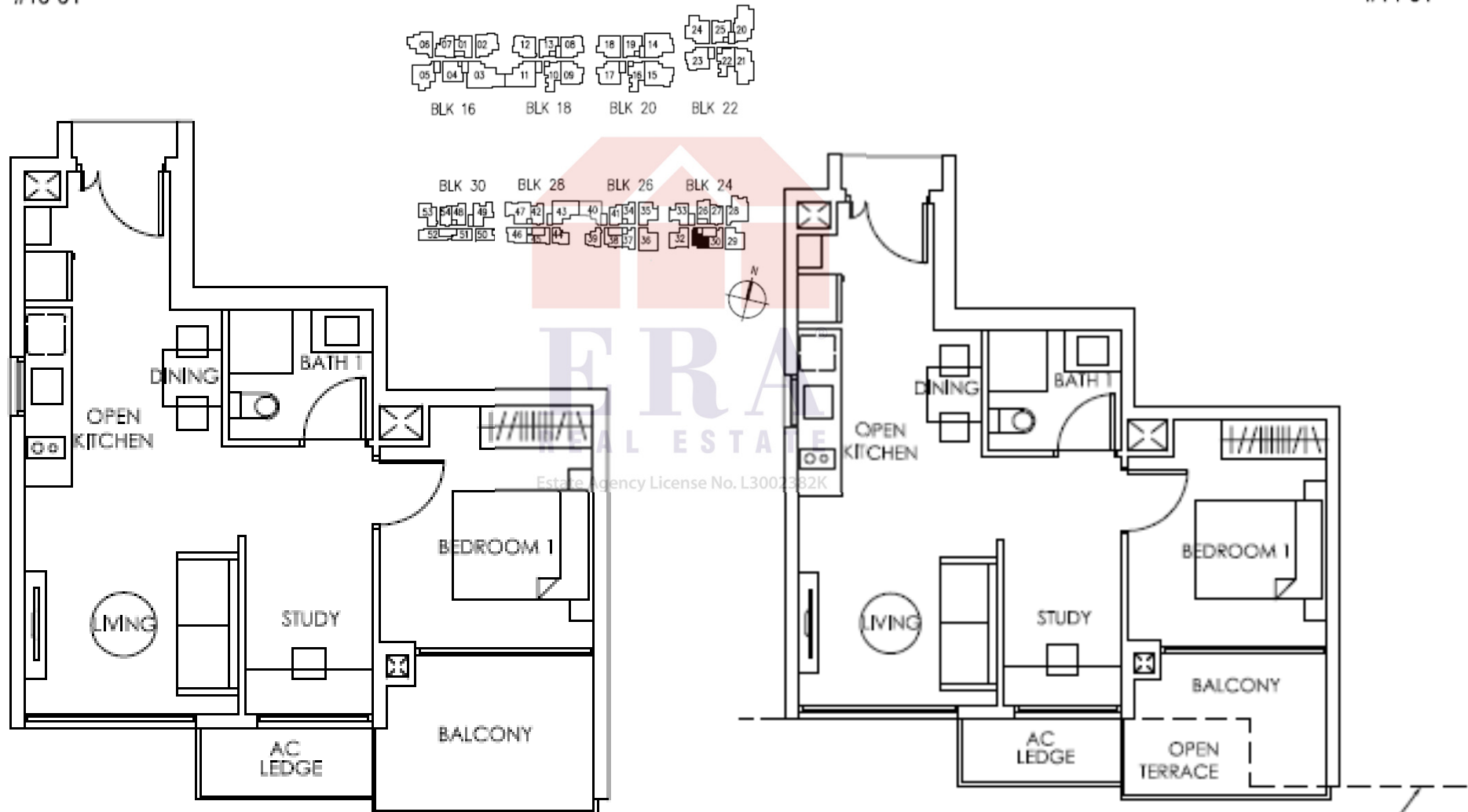


**Type A4 (S)** 54 sqm / 581 sqf

#13-31

**Type A4 (S)(T)** 54 sqm / 581 sqf

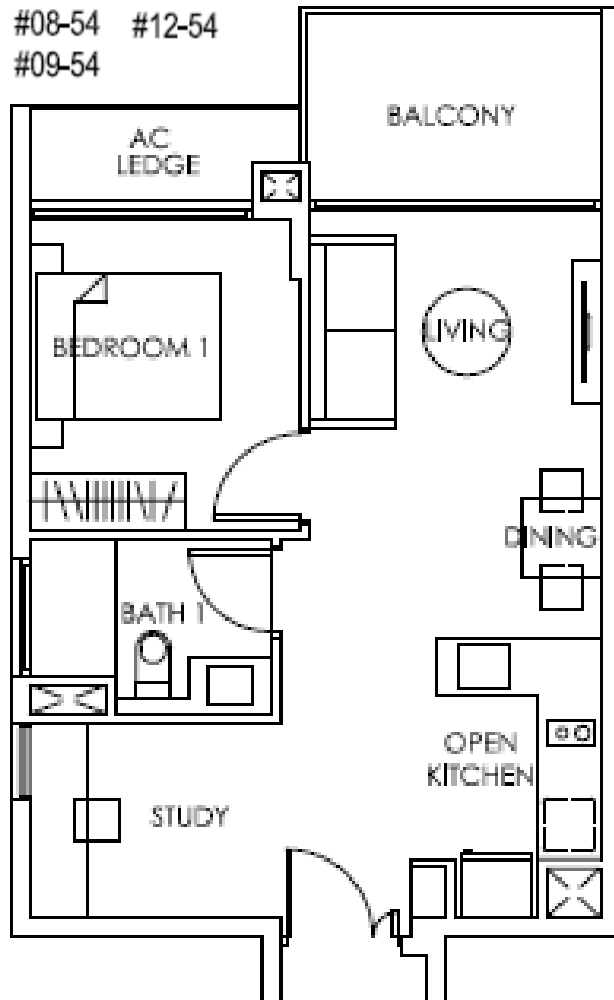
#14-31



All plans are subjected to amendments as may be approved by the relevant authorities. Floor areas are approximate and subject to final survey.

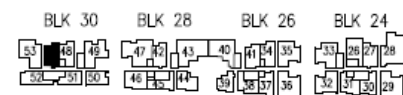
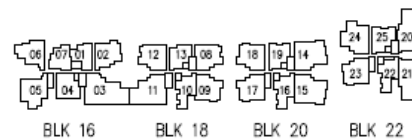
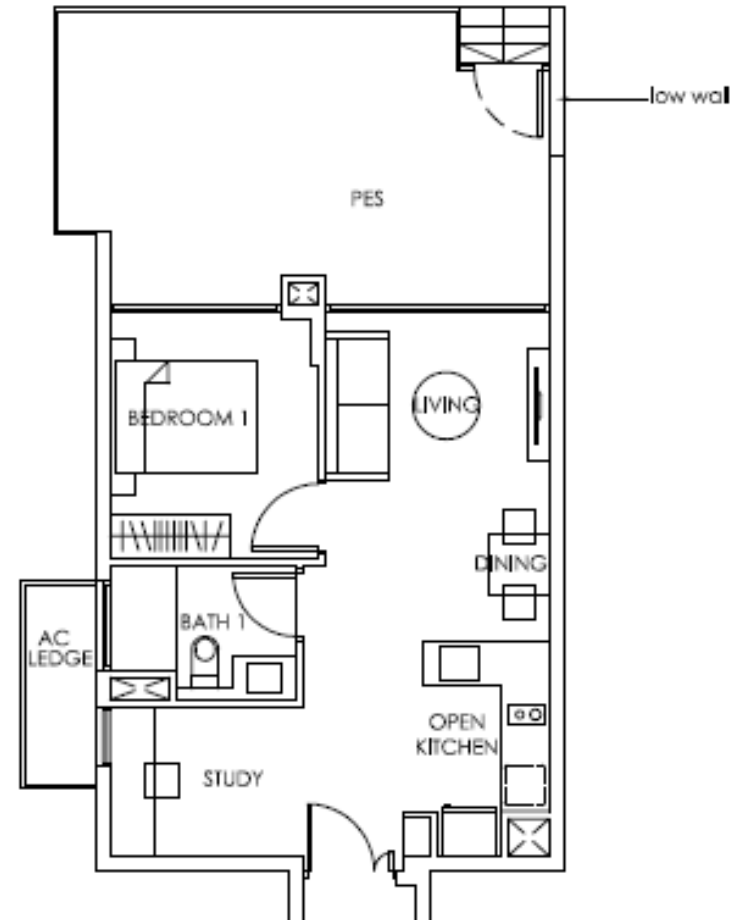
### Type A5a (S) 55 sqm / 592 sqf

#06-54 #10-54  
#07-54 #11-54  
#08-54 #12-54  
#09-54



### Type A5a (S)(P) 75 sqm / 807 sqf

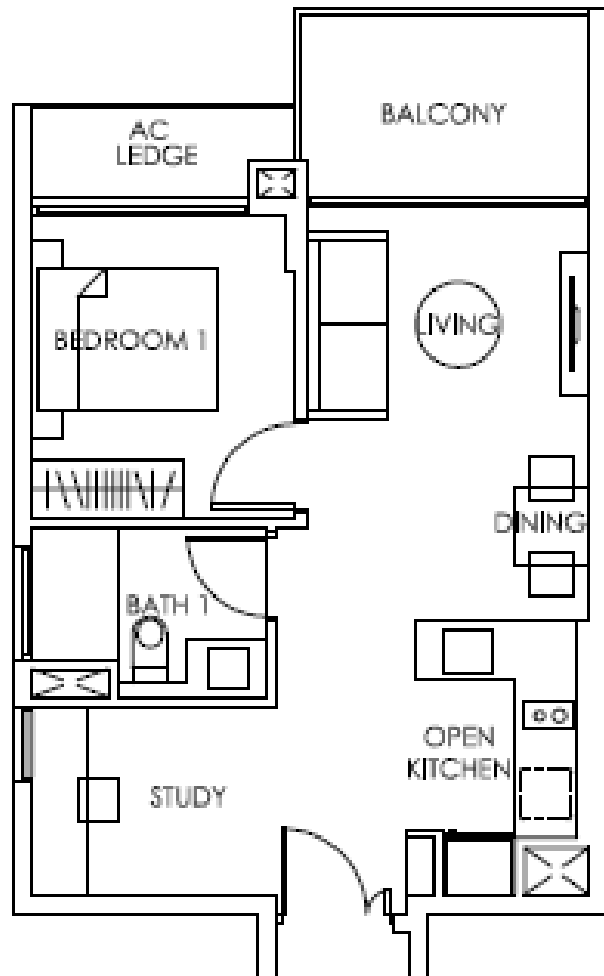
#05-54



**Type A5 (S)** 55 sqm / 592 sqf

#13-54

#14-54

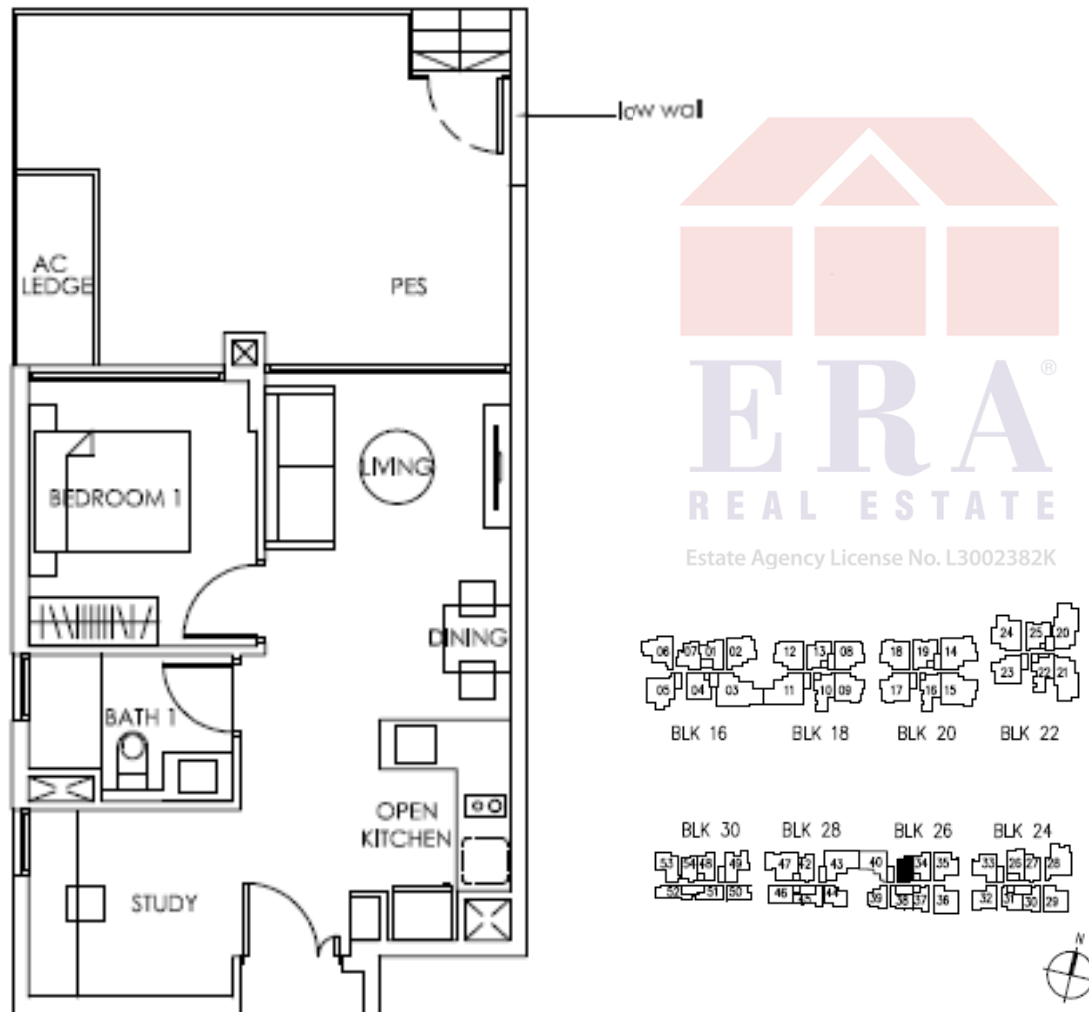


Estate Agency License No. L3002382K



**Type A5c (S)(P)** 72 sqm / 775 sqf

#05-41



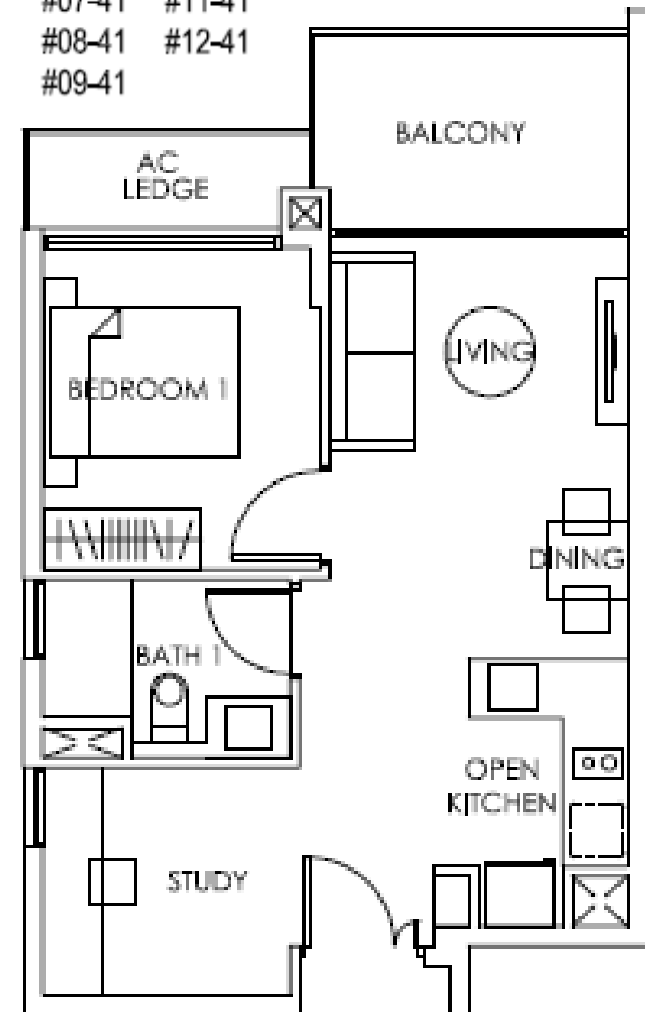
**Type A5c (S)** 55 sqm / 592 sqf

#06-41 #10-41

#07-41 #11-41

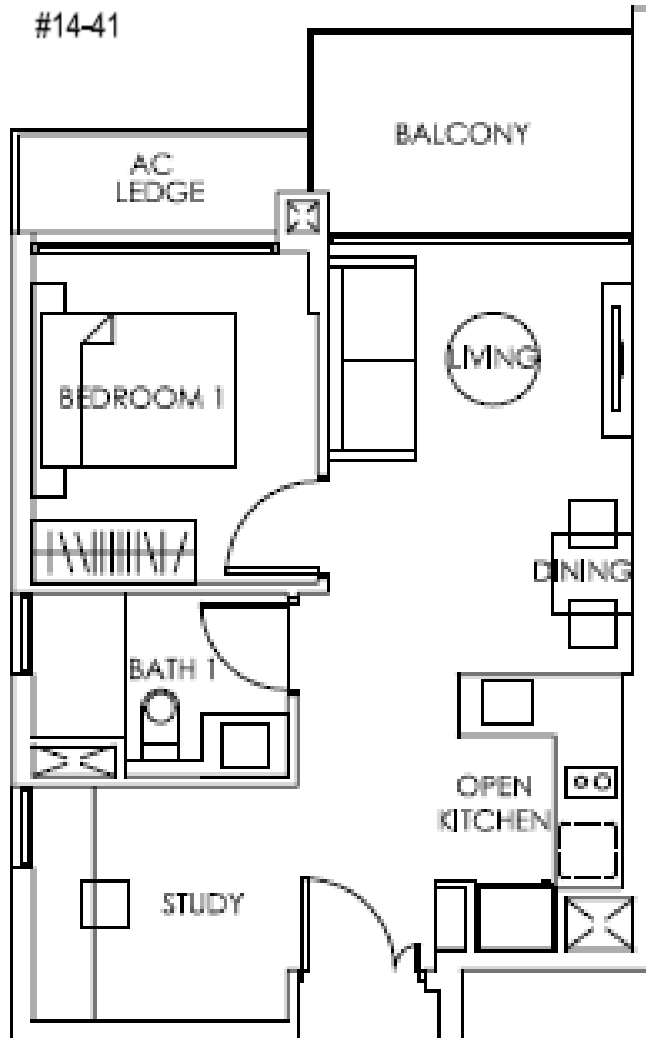
#08-41 #12-41

#09-41



Type A5b (S) 55 sqm / 592 sqf

#13-41  
#14-41



Estate Agency License No. L3002382K



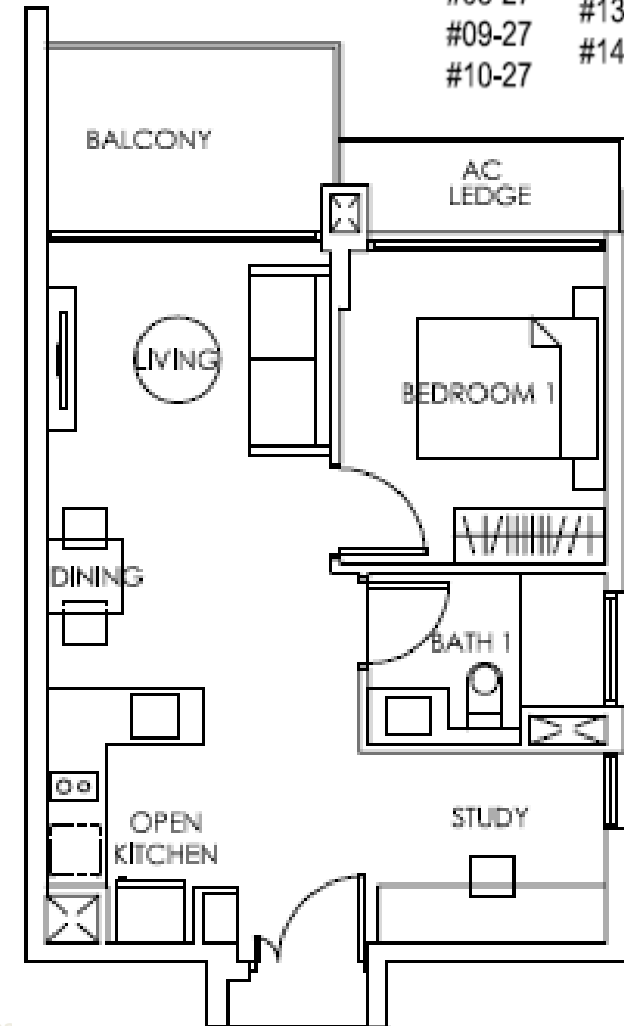
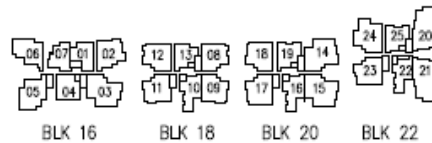
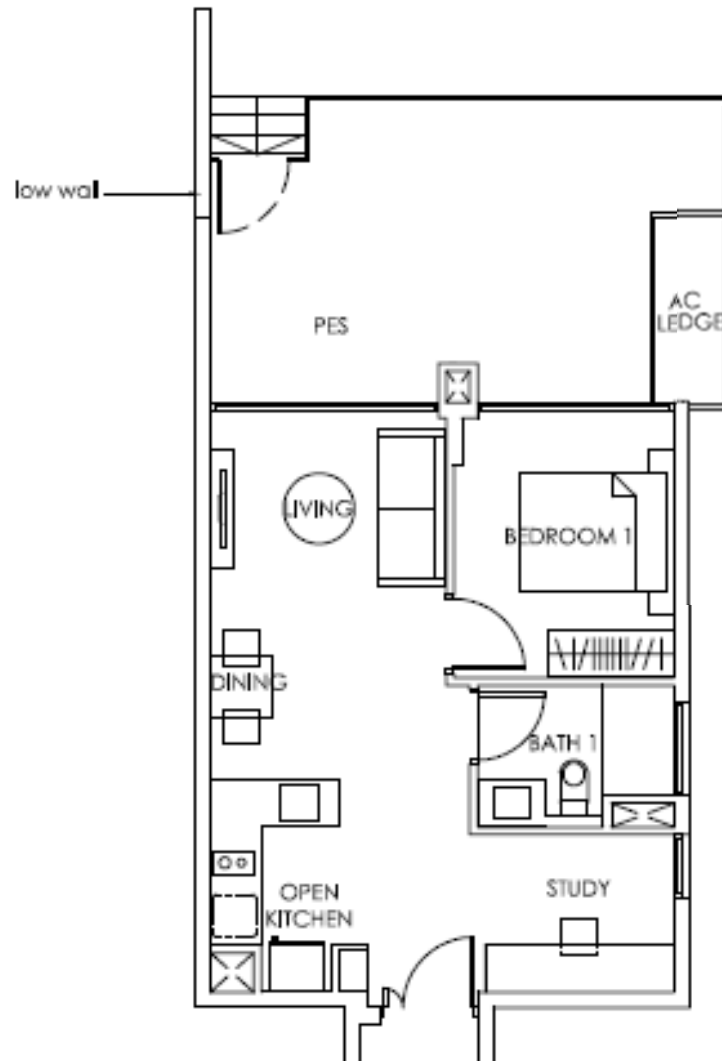
All plans are subjected to amendments as may be approved by the relevant authorities. Floor areas are approximate and subject to final survey.

**Type A5d (S)(P)** 72 sqm / 775 sqf

#05-27

**Type A5d (S)** 56 sqm / 603 sqf

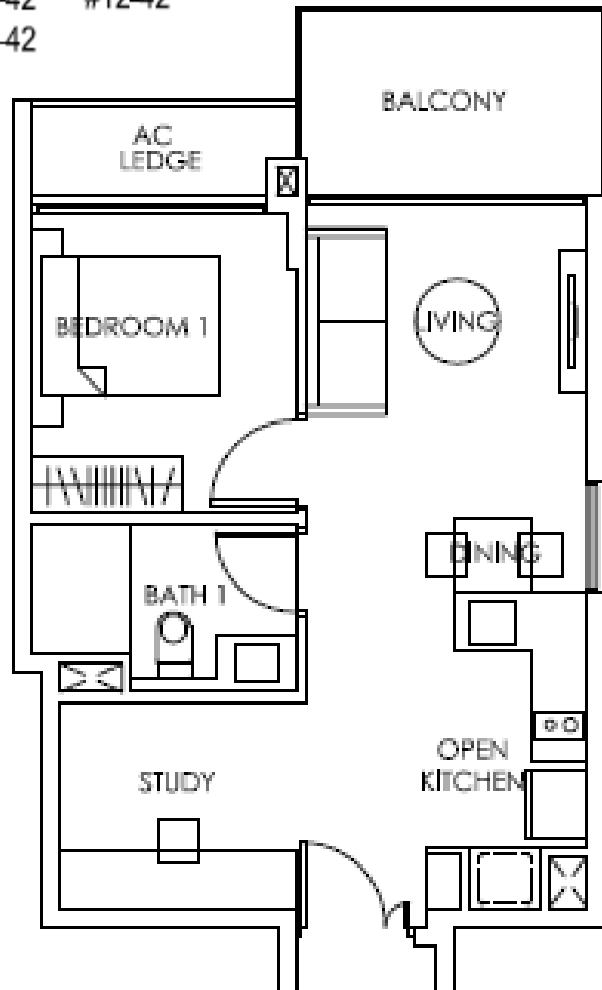
#06-27 #11-27  
#07-27 #12-27  
#08-27 #13-27  
#09-27 #14-27  
#10-27



All plans are subjected to amendments as may be approved by the relevant authorities. Floor area

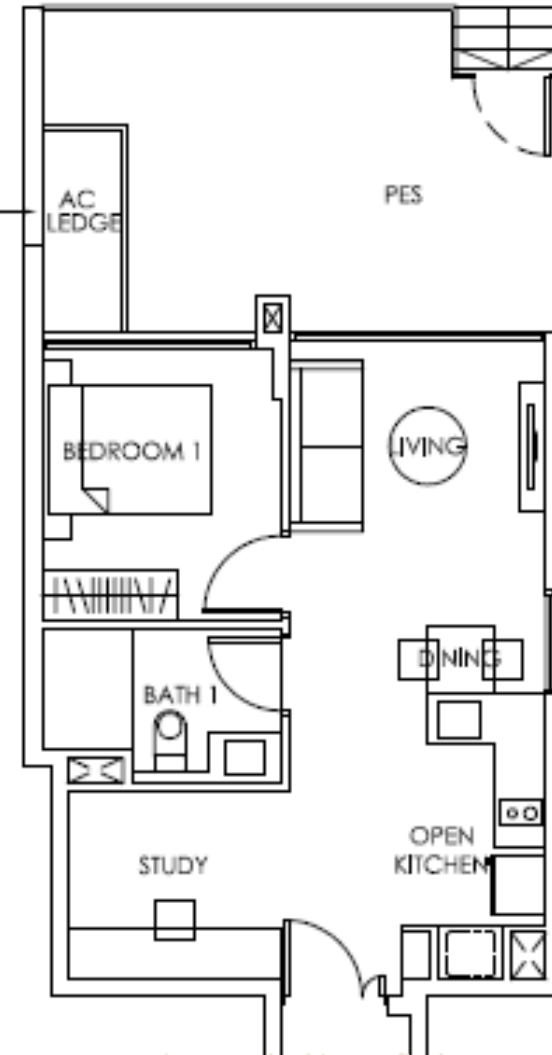
### Type A5f (S) 56 sqm / 603 sqf

- #06-42 #10-42
- #07-42 #11-42
- #08-42 #12-42
- #09-42

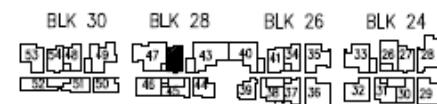
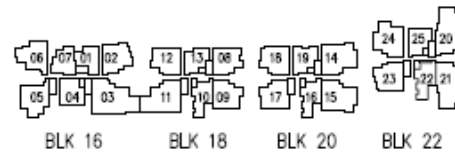


### Type A5f (S)(P) 70 sqm / 753 sqf

- #05-42



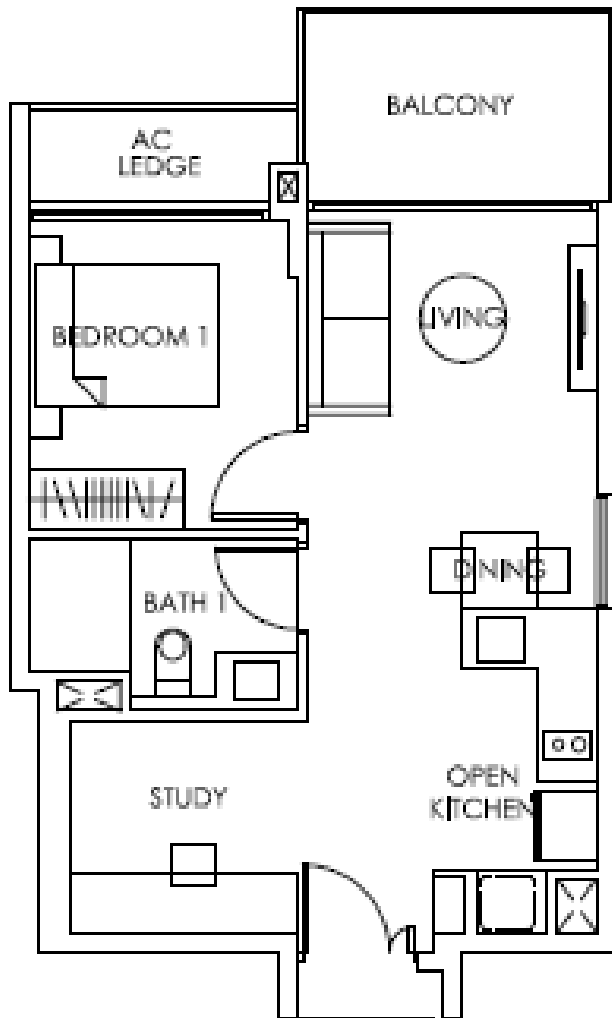
Estate Agency License No. L3002382K



All plans are subjected to amendments as may be approved by the relevant authorities. Floor areas are approximate and subject to final survey.

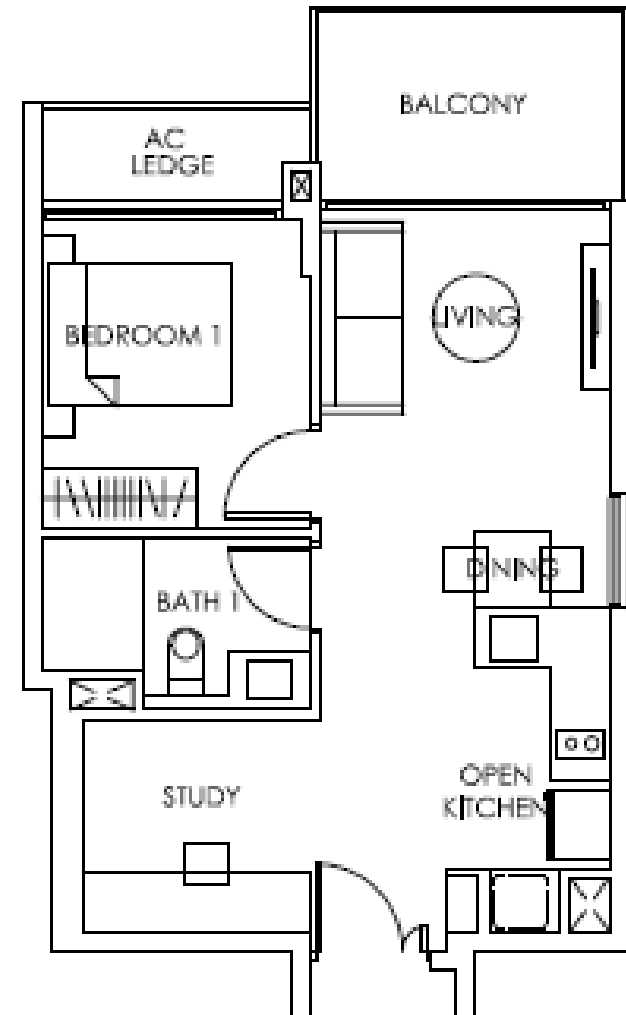
**Type A5e (S)** 56 sqm / 603 sqf

#13-42  
#14-42



**Type A5e (S)** 56 sqm / 603 sqf

#13-42  
#14-42



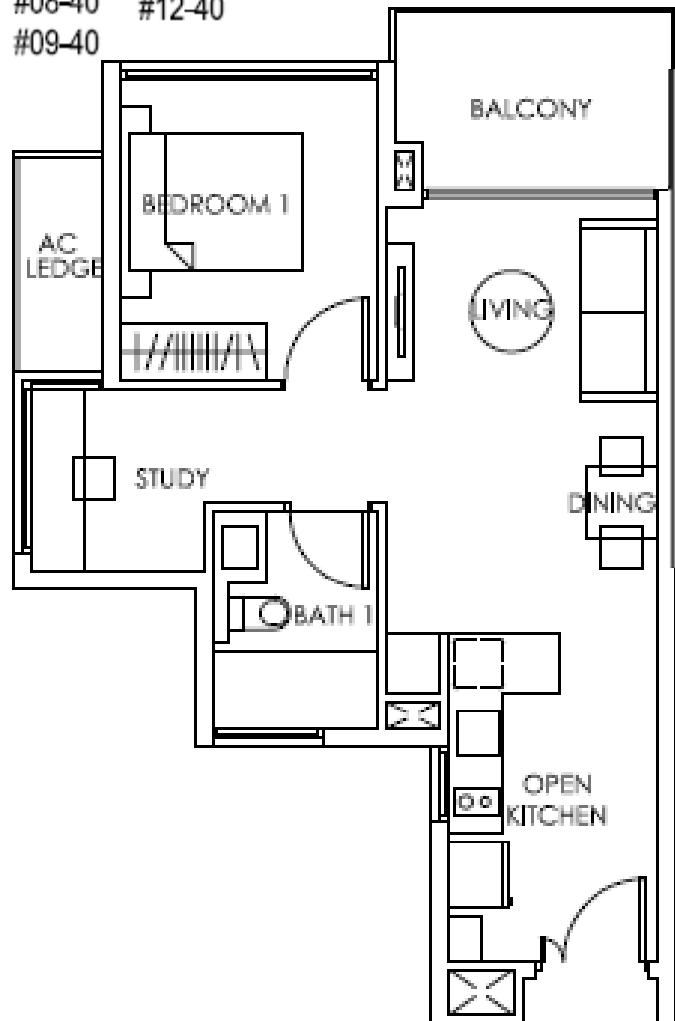
Estate Agency License No. L3002382K



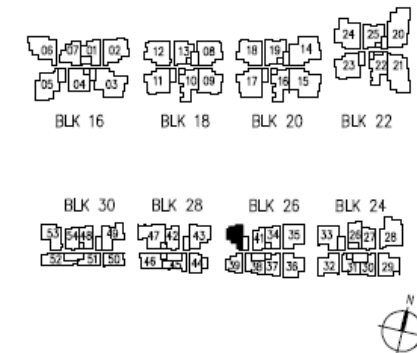
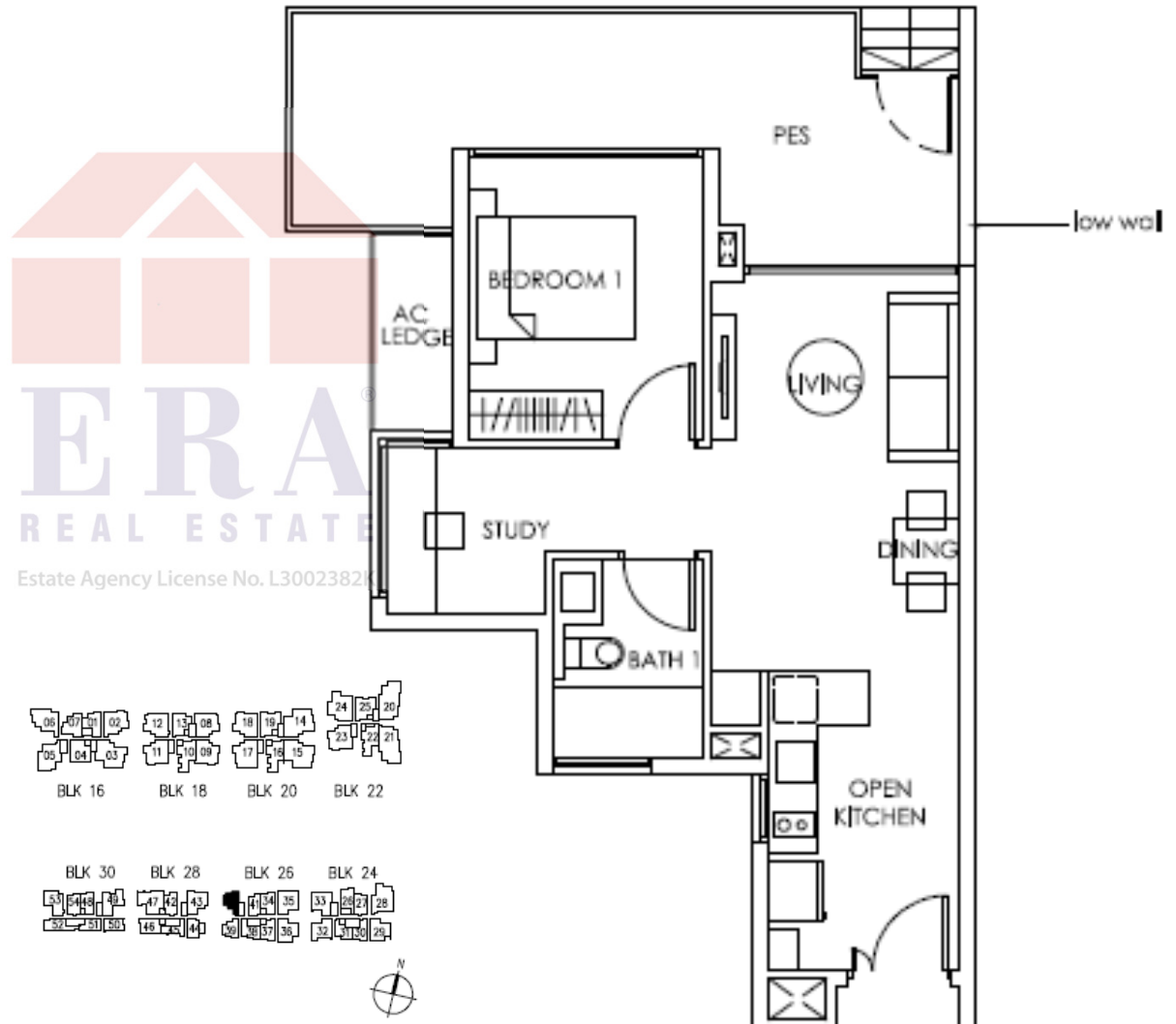
to be approved by the relevant authorities. Floor areas are approximate and subject to final survey.

### Type A6 (S) 57 sqm / 614 sqf

- #06-40 #10-40
- #07-40 #11-40
- #08-40 #12-40
- #09-40



### Type A6 (S)(P) 71 sqm / 764 sqf #05-40



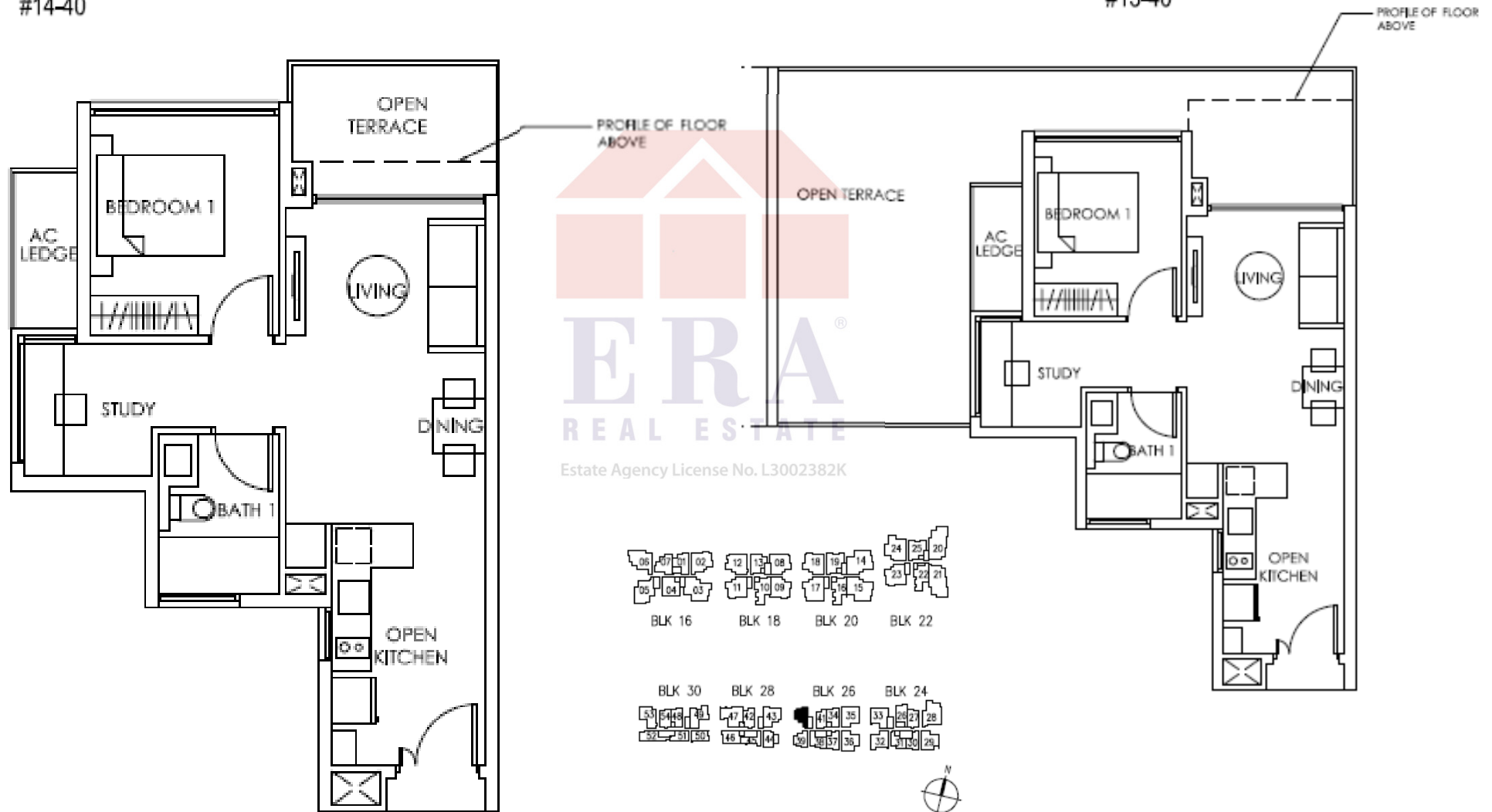
All plans are subjected to amendments as may be approved by the relevant authorities. Floor areas are approximate and subject to final survey.

**Type A6 (S)(T)** 57 sqm / 614 sqf

#14-40

**Type A6a (S)** 91 sqm / 980 sqf

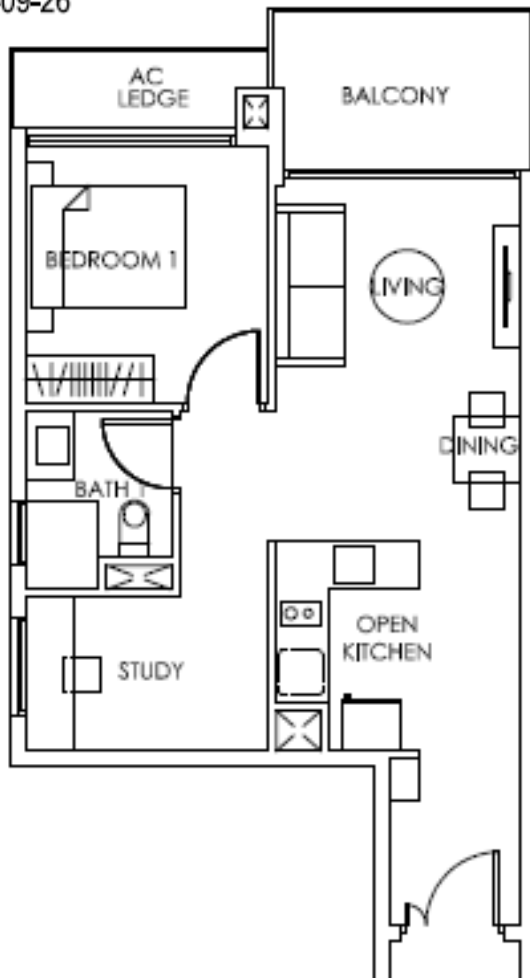
#13-40



All plans are subjected to amendments as may be approved by the relevant authorities. Floor areas are approximate and subject to final survey.

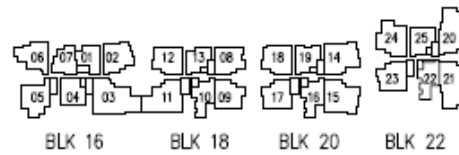
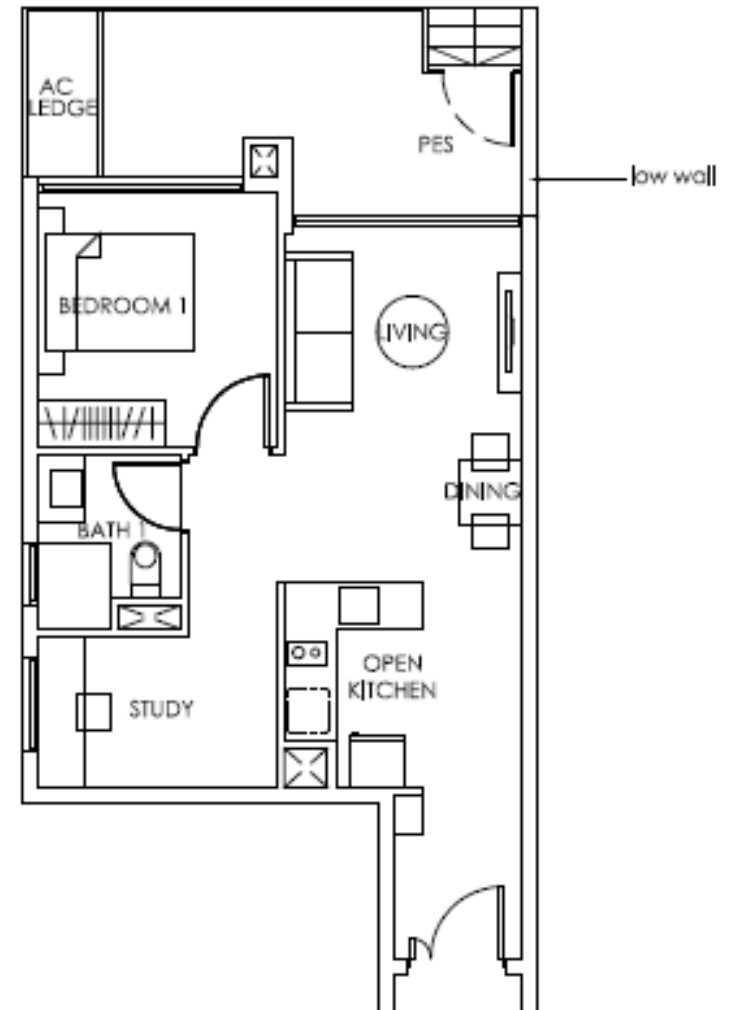
### Type A7a (S) 61 sqm / 657 sqf

- #06-26 #10-26
- #07-26 #11-26
- #08-26 #12-26
- #09-26



### Type A7a (S)(P) 66 sqm / 710 sqf

- #05-26



**Type A7 (S)** 61 sqm / 657 sqf  
#13-26

**Type A7 (S)(T)** 61 sqm / 657 sqf  
#14-26

