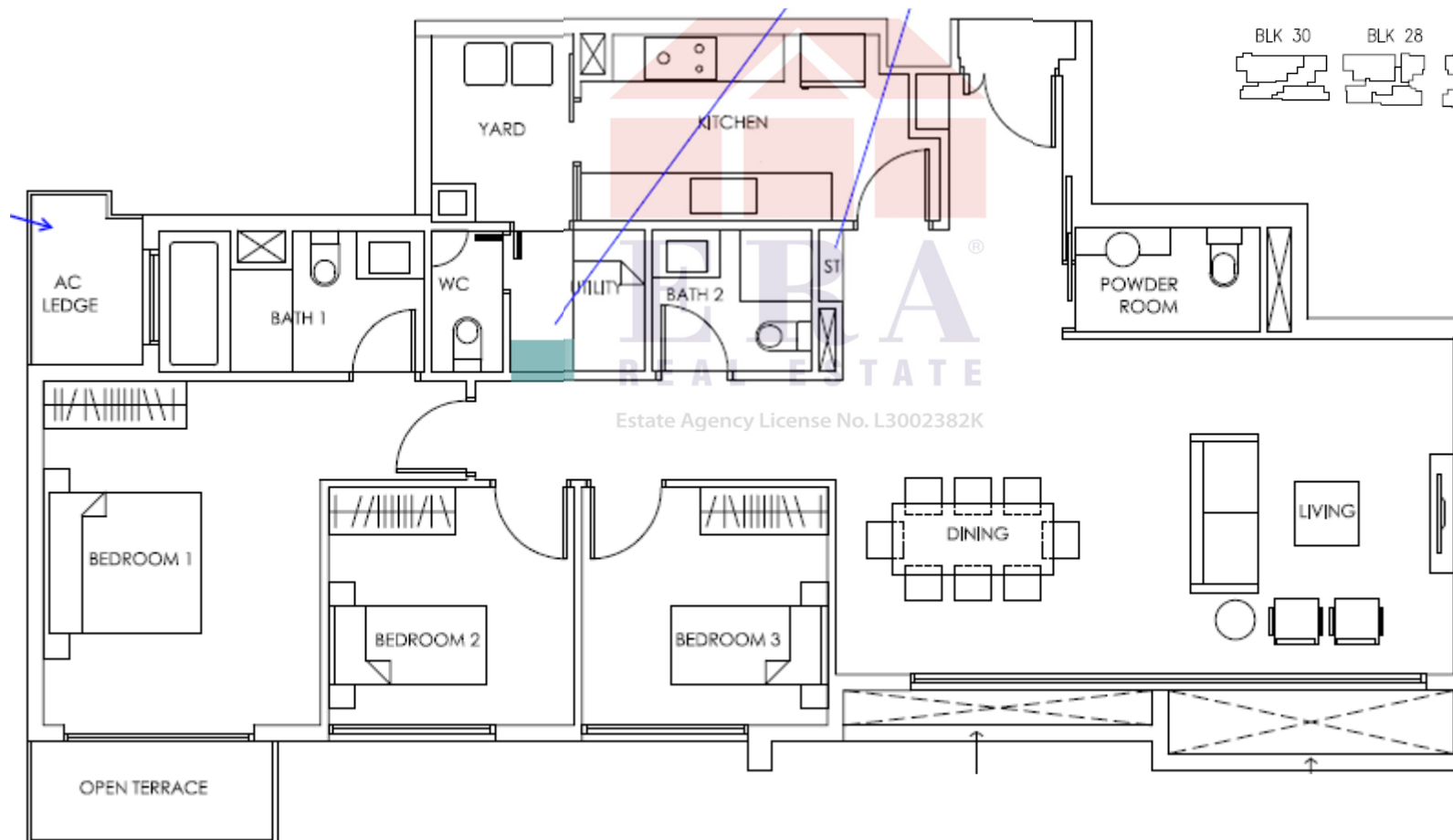
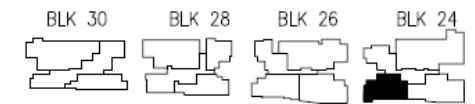
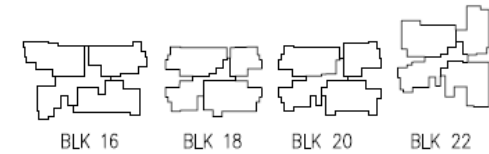


Type PH 1 132 sqm / 1421 sqf

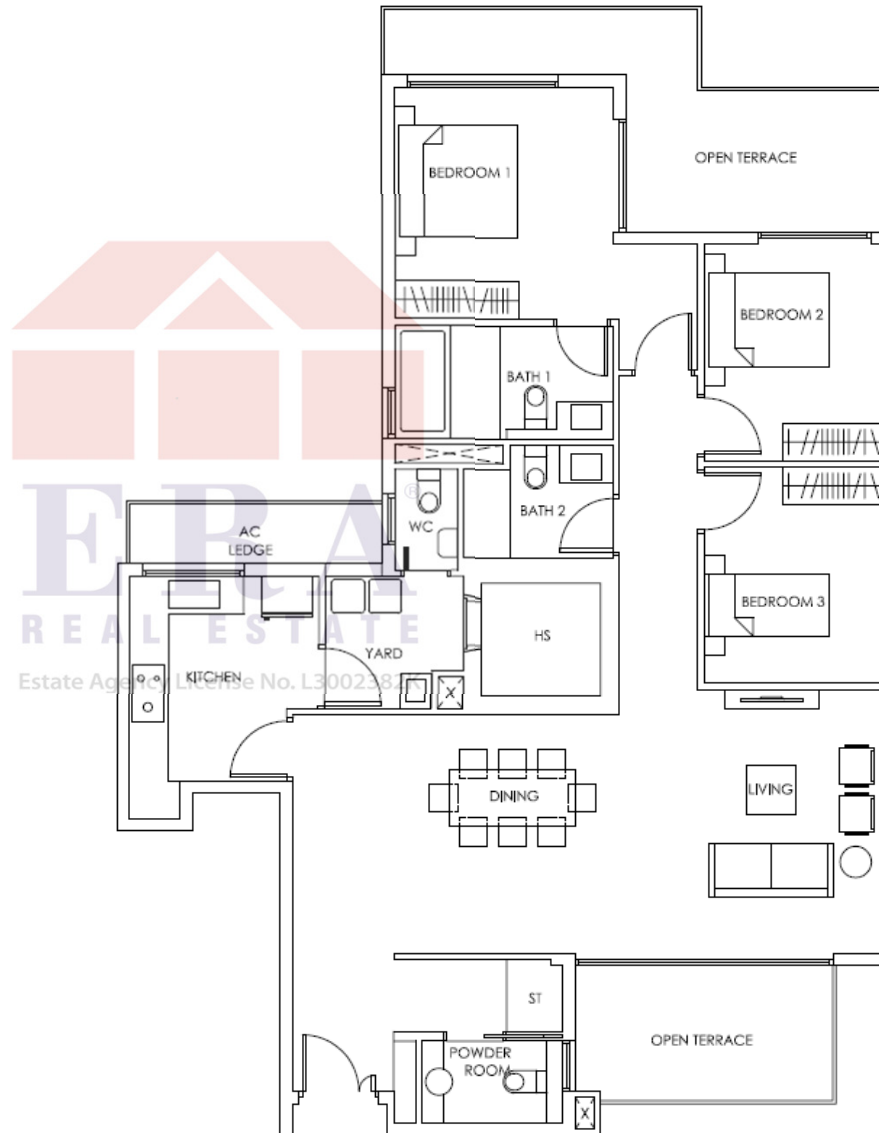
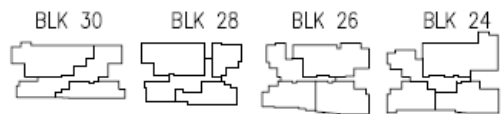
#15-32



All plans are subjected to amendments as may be approved by the relevant authorities. Floor areas are approximate and subject to final survey.

Type PH 2 162 sqm / 1744 sqf

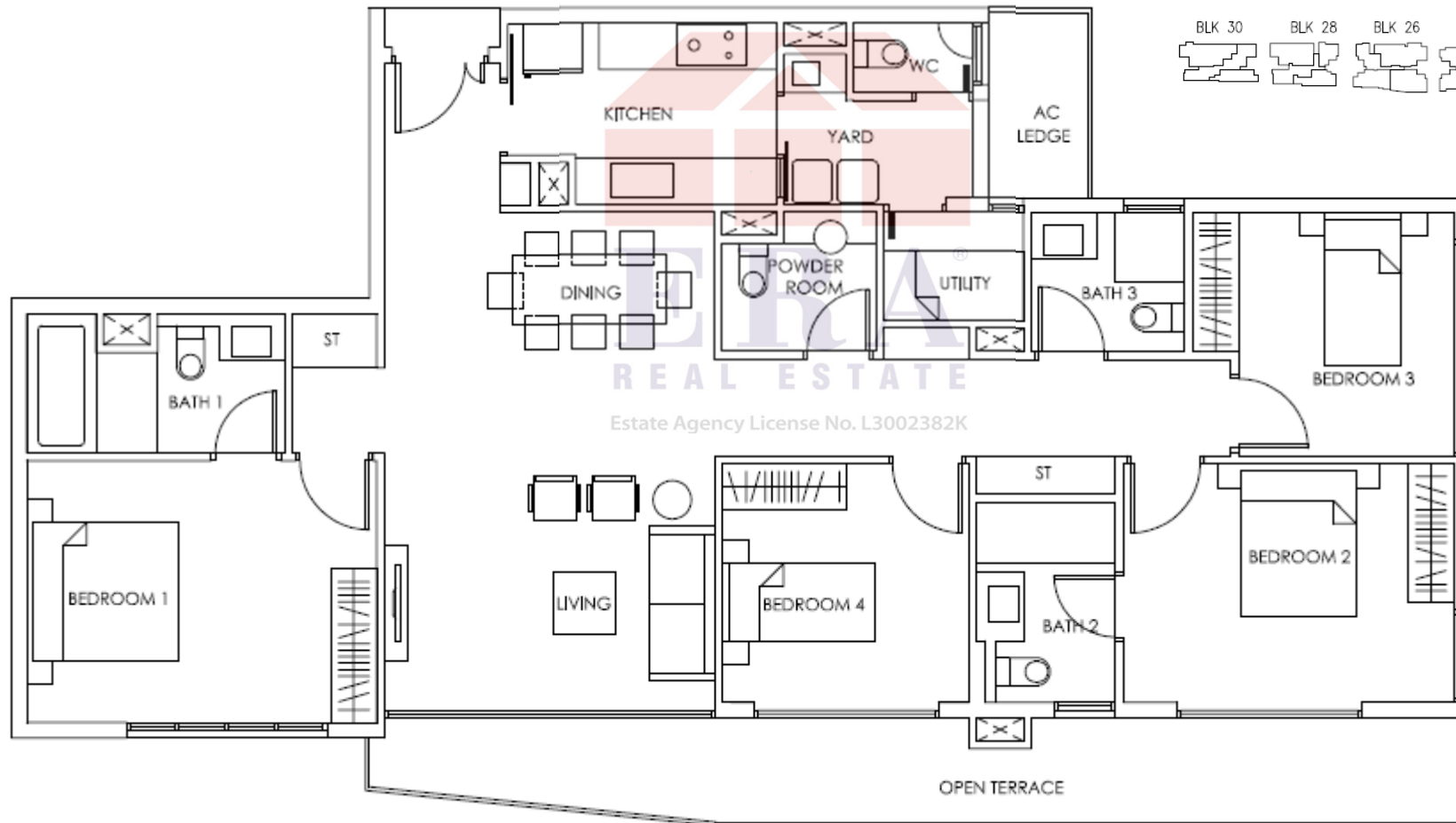
#15-20



All plans are subjected to amendments as may be approved by the relevant authorities. Floor areas are approximate and subject to final survey.

Type PH 3 160 sqm / 1722 sqf

#15-30



Type PH 4 215 sqm / 2314 sqf

#15-48



BLK 16

BLK 18

BLK 20

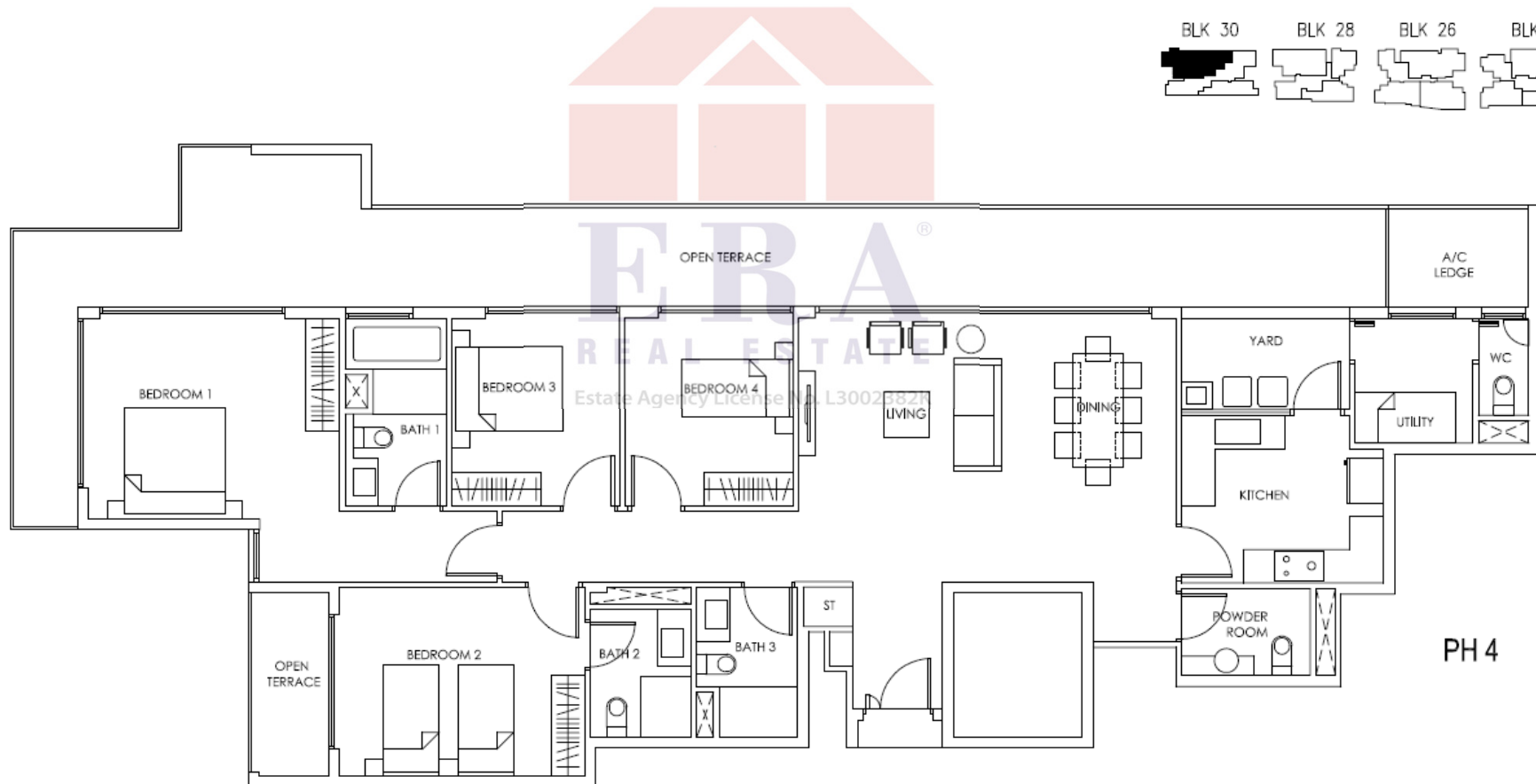
BLK 22

BLK 30

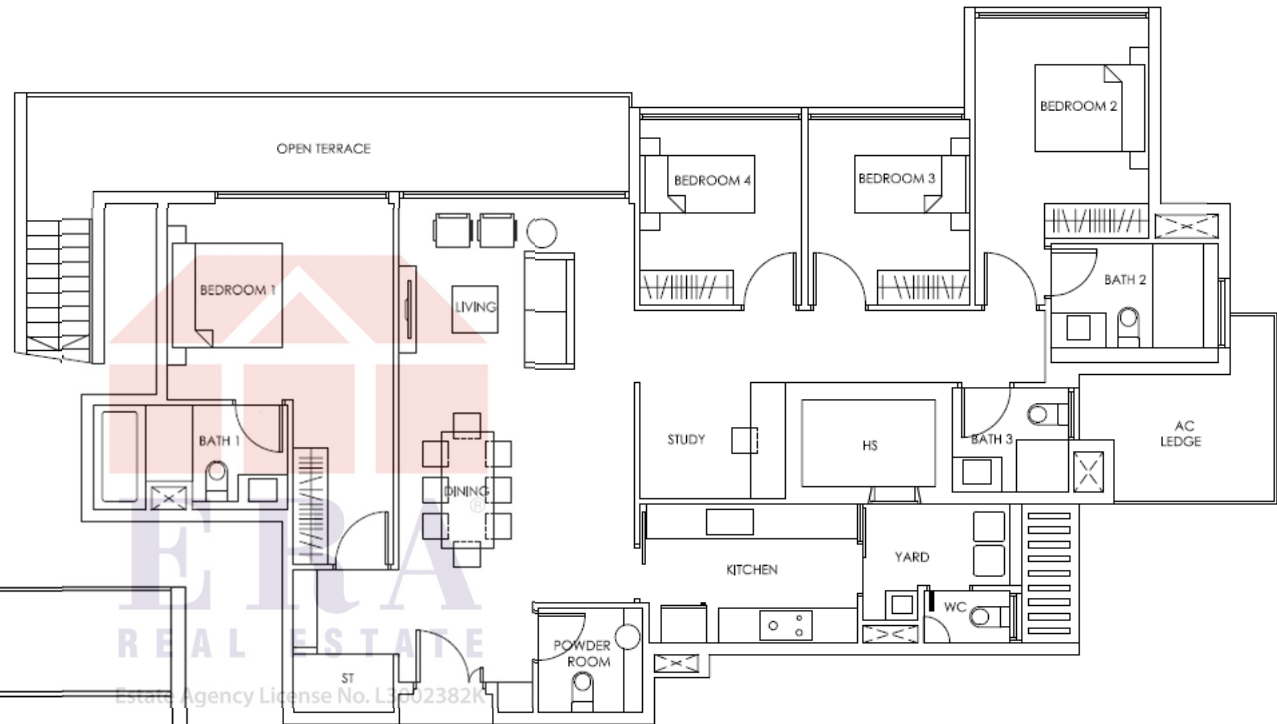
BLK 28

BLK 26

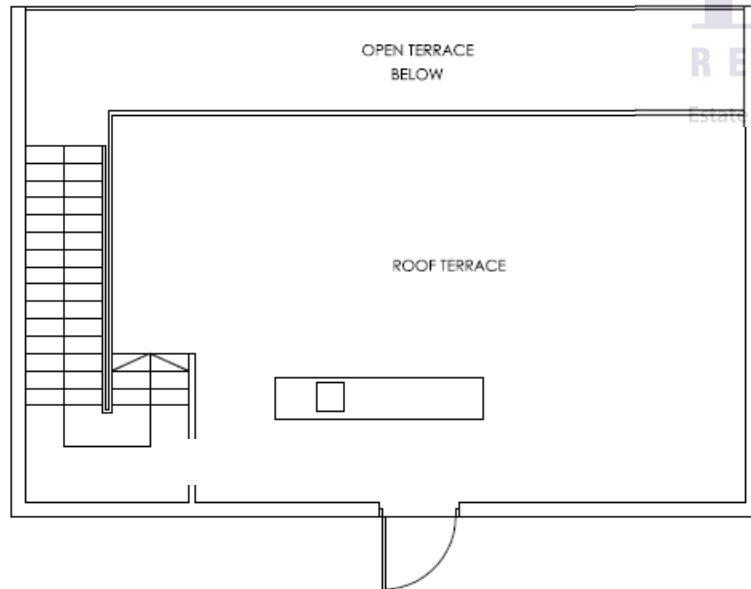
BLK 24



Type PH 5 239 sqm / 2573 sqf
#15-01



(Roof)

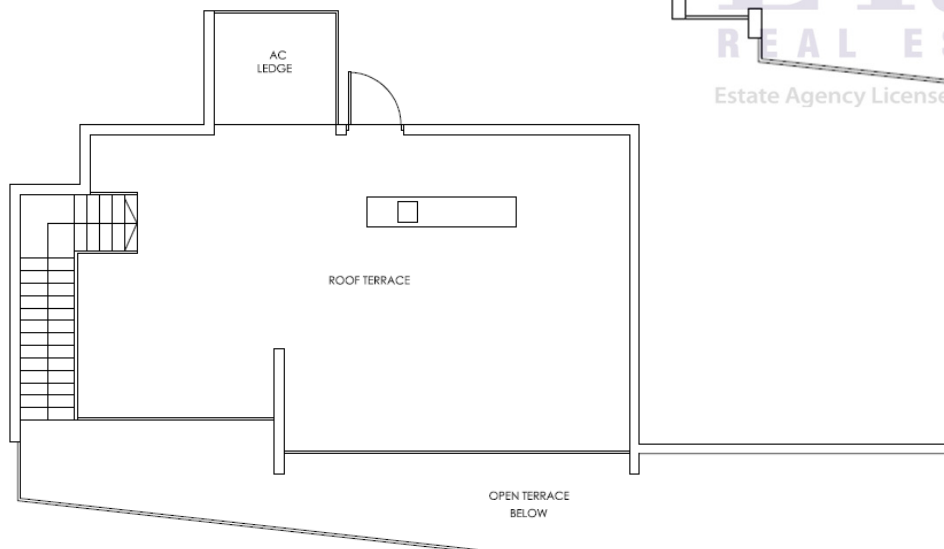
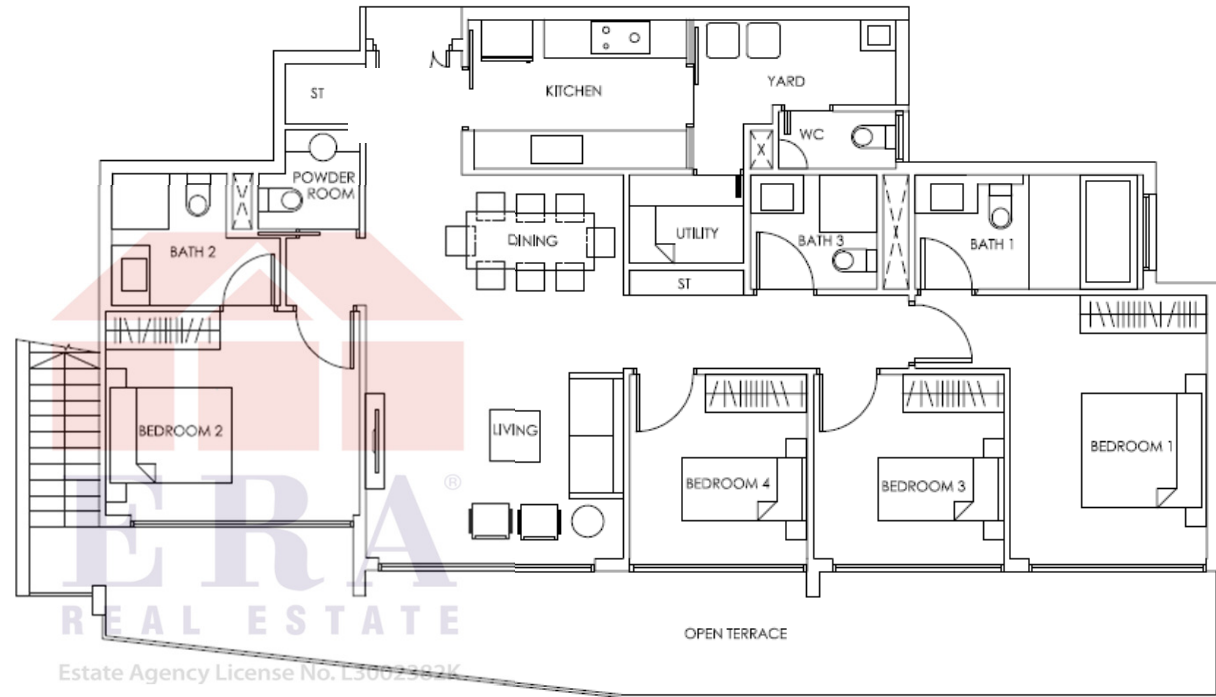


All plans are subjected to amendments as may be approved by the relevant authorities. Floor areas are approximate and subject to final survey.

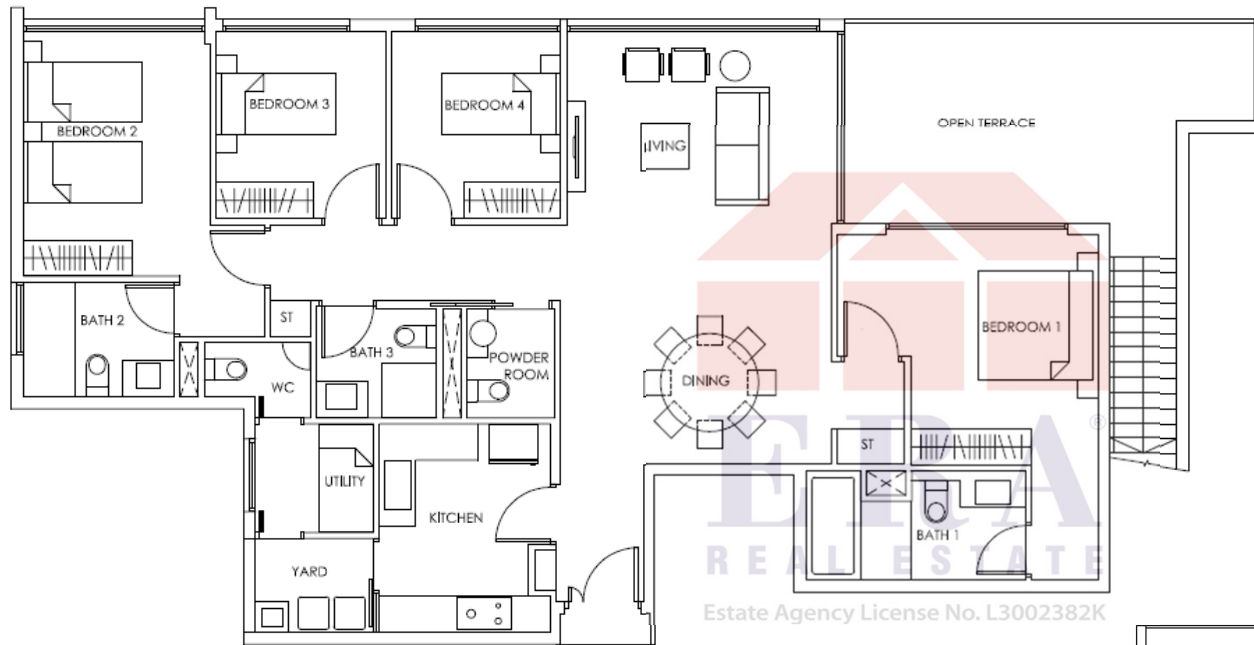
Type PH 6 245 sqm / 2637 sqf

#15-36

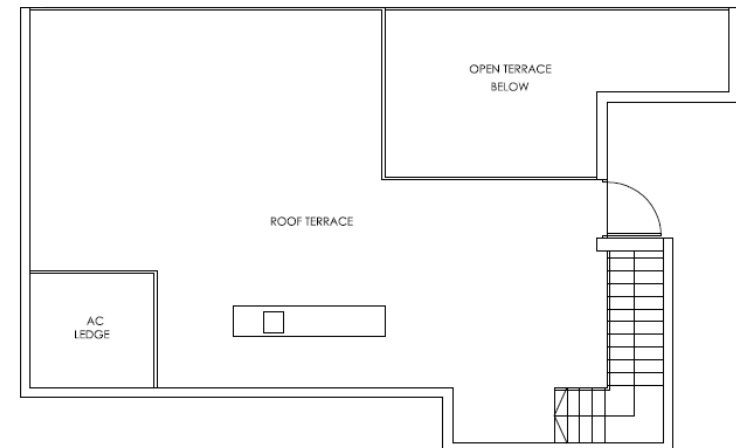
(Roof)



Type PH 7 244 sqm / 2626 sqf #15-47

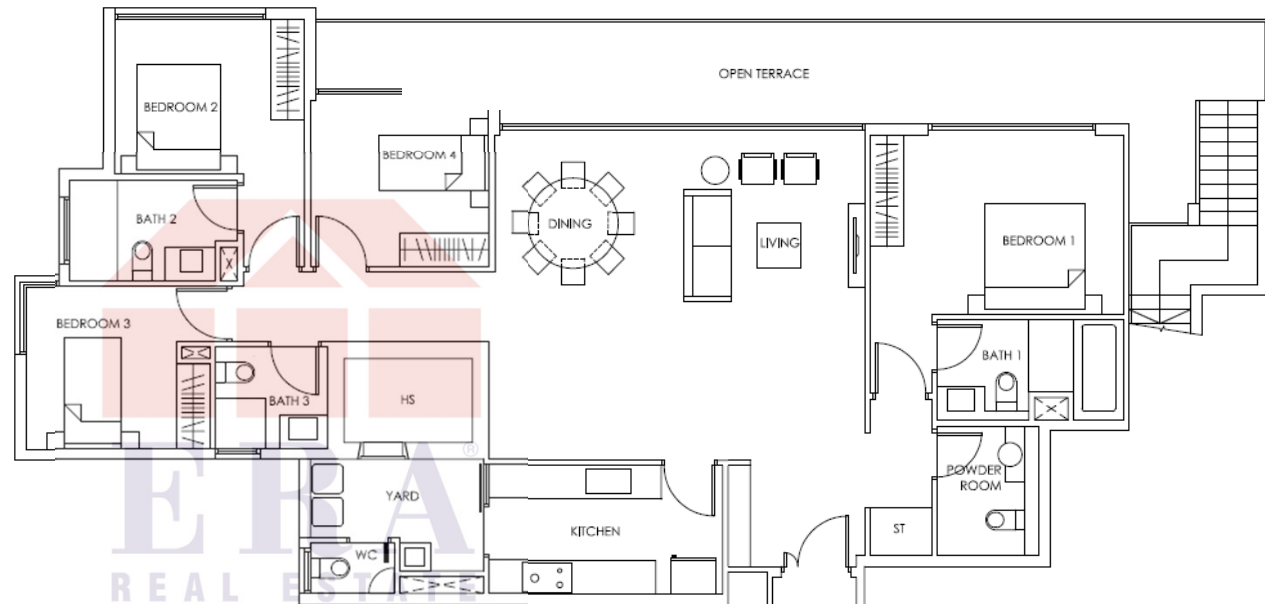


(Roof)

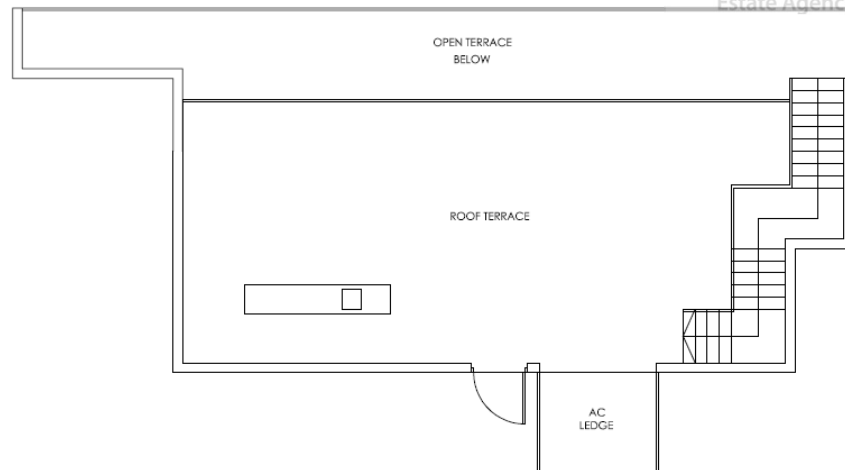


Type PH 8 266 sqm / 2863 sqf

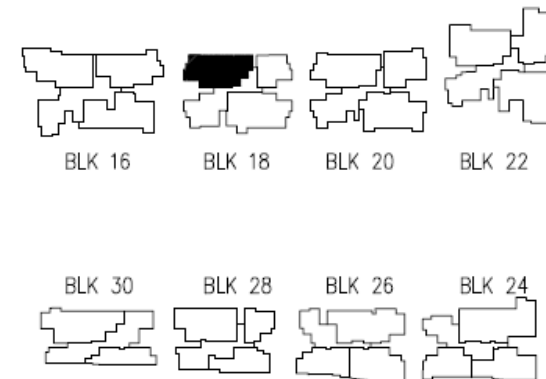
#15-12



(Roof)



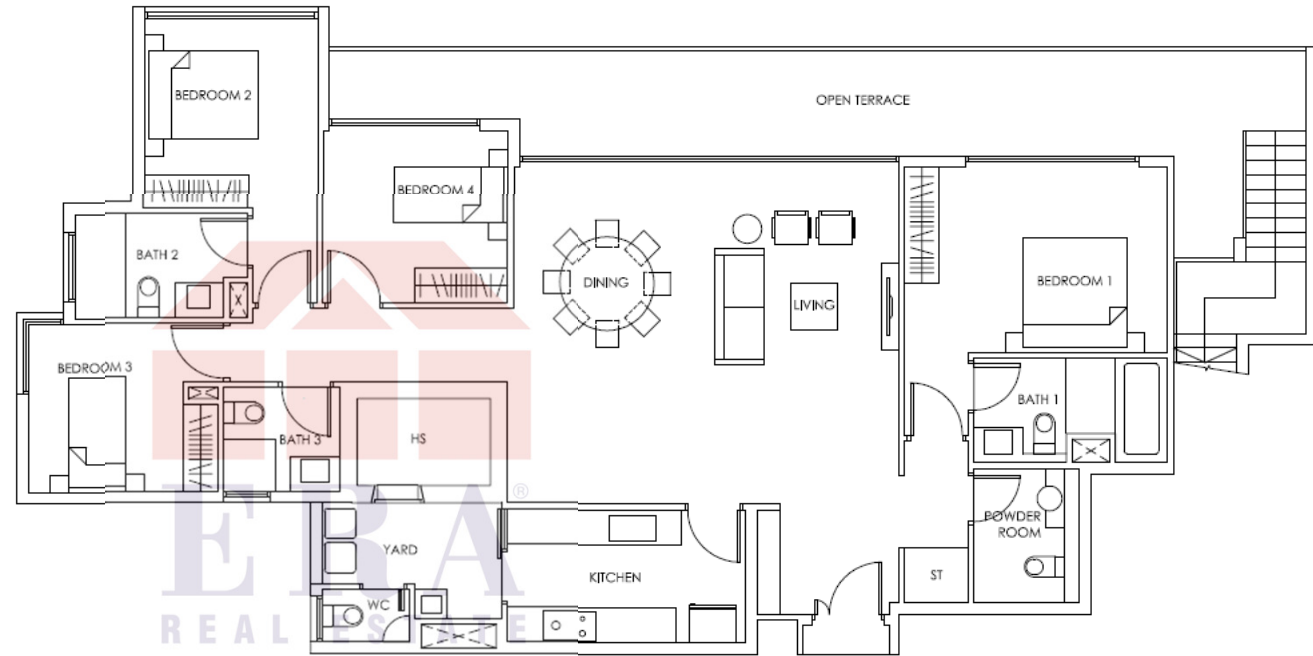
Estate Agency License No. L3002382K



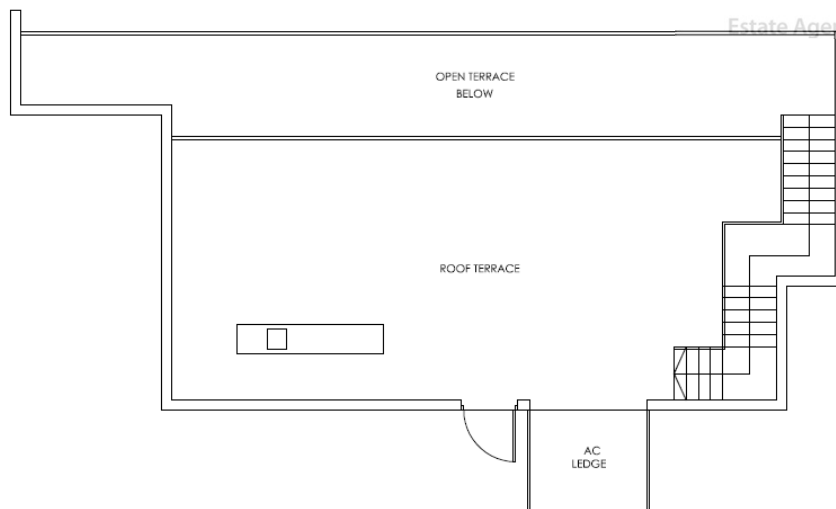
All plans are subjected to amendments as may be approved by the relevant authorities. Floor areas are approximate and subject to final survey.

Type PH 9 266 sqm / 2863 sqf

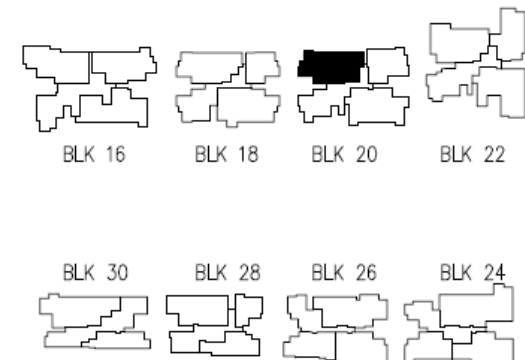
#15-18



(Roof)



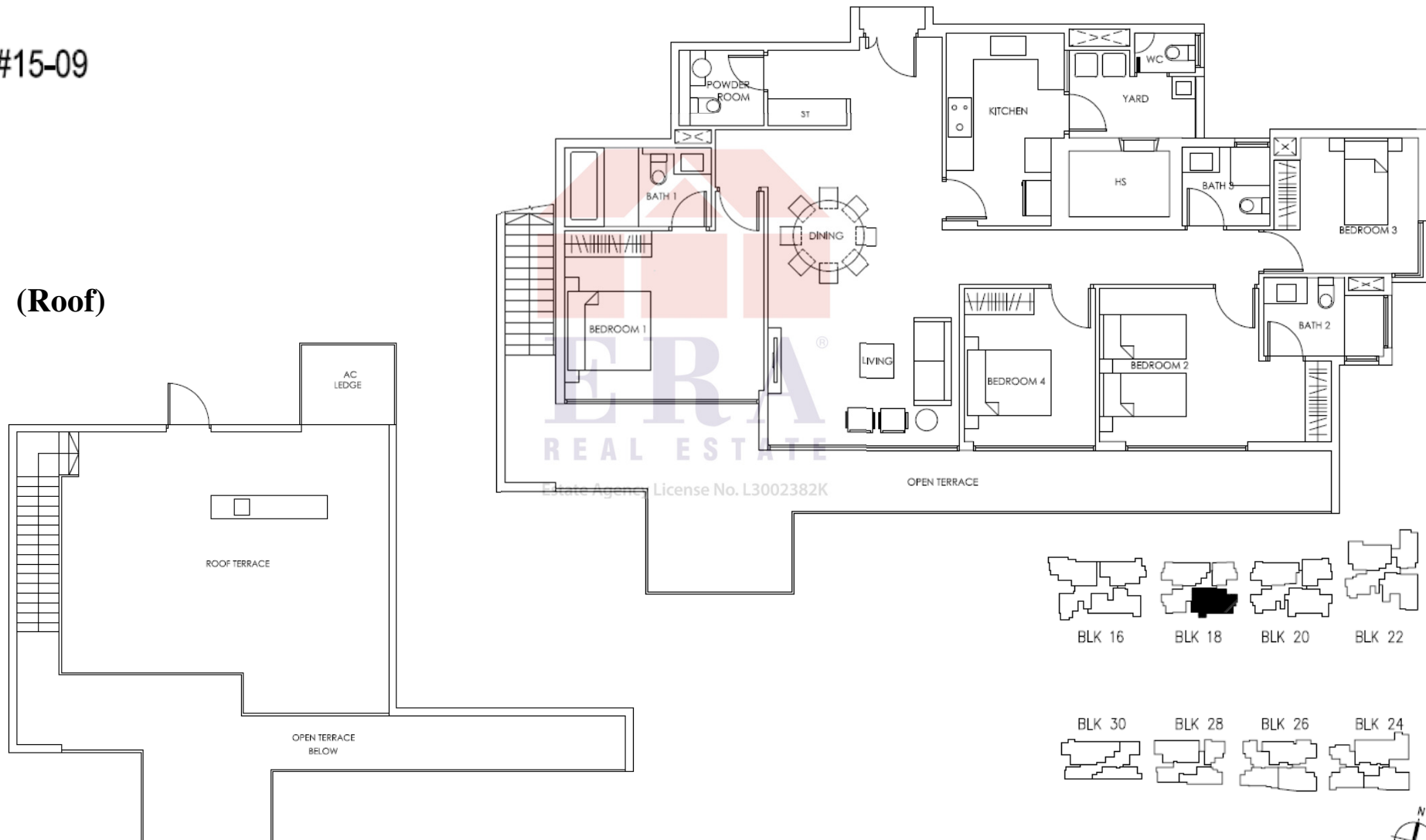
Estate Agency License No. L3002382K



Type PH 10 268 sqm / 2885 sqf

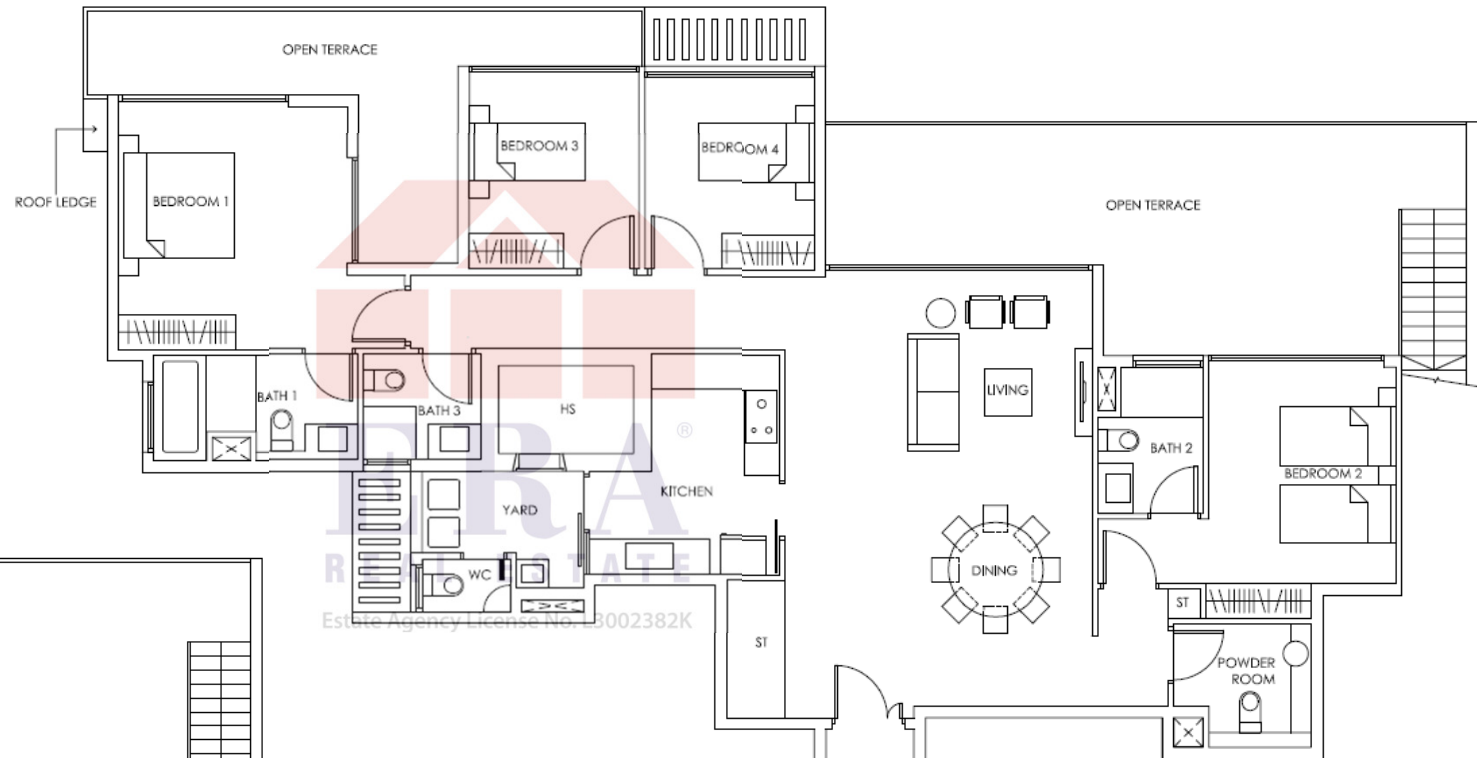
#15-09

(Roof)

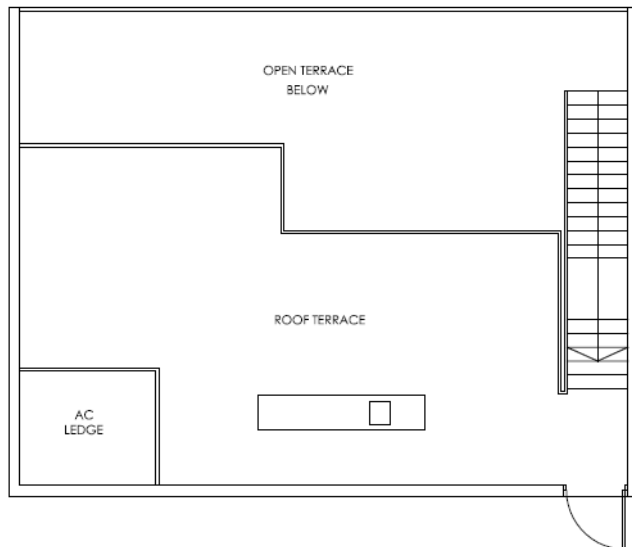


Type PH 11 272 sqm / 2928 sqf

#15-06



(Roof)

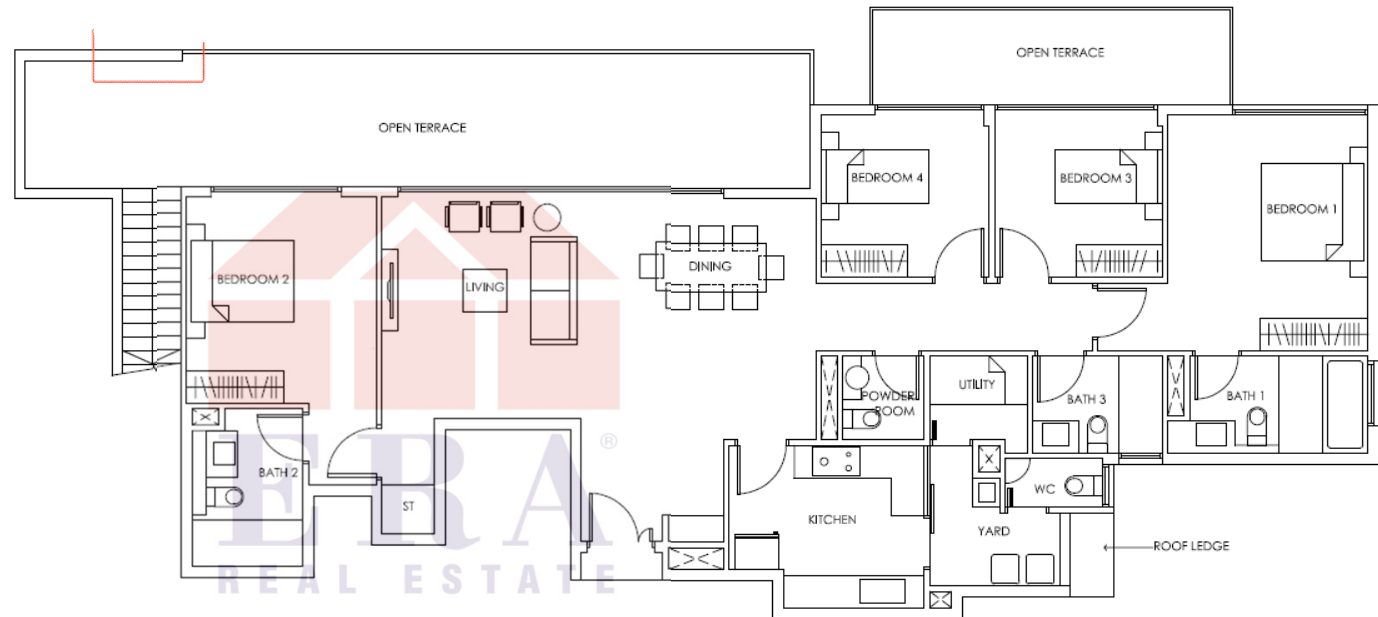


All plans are open subjected to amendments as may be approved by the relevant authorities. Floor areas are approximate and subject to final survey.

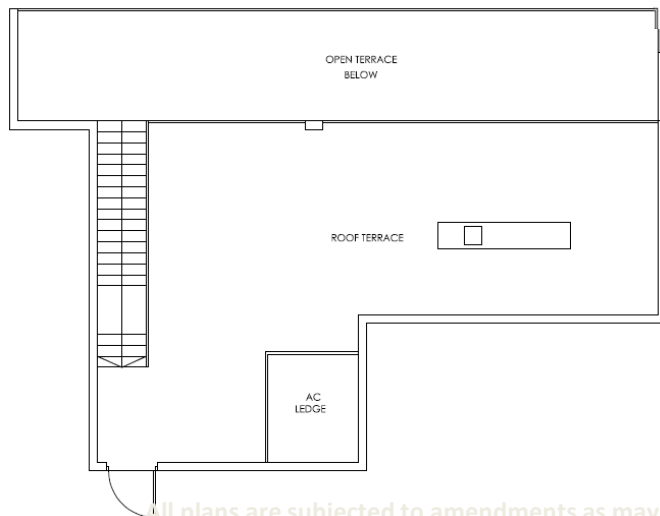


Type PH 12 278 sqm / 2992 sqf

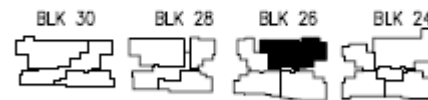
#15-35



(Roof)

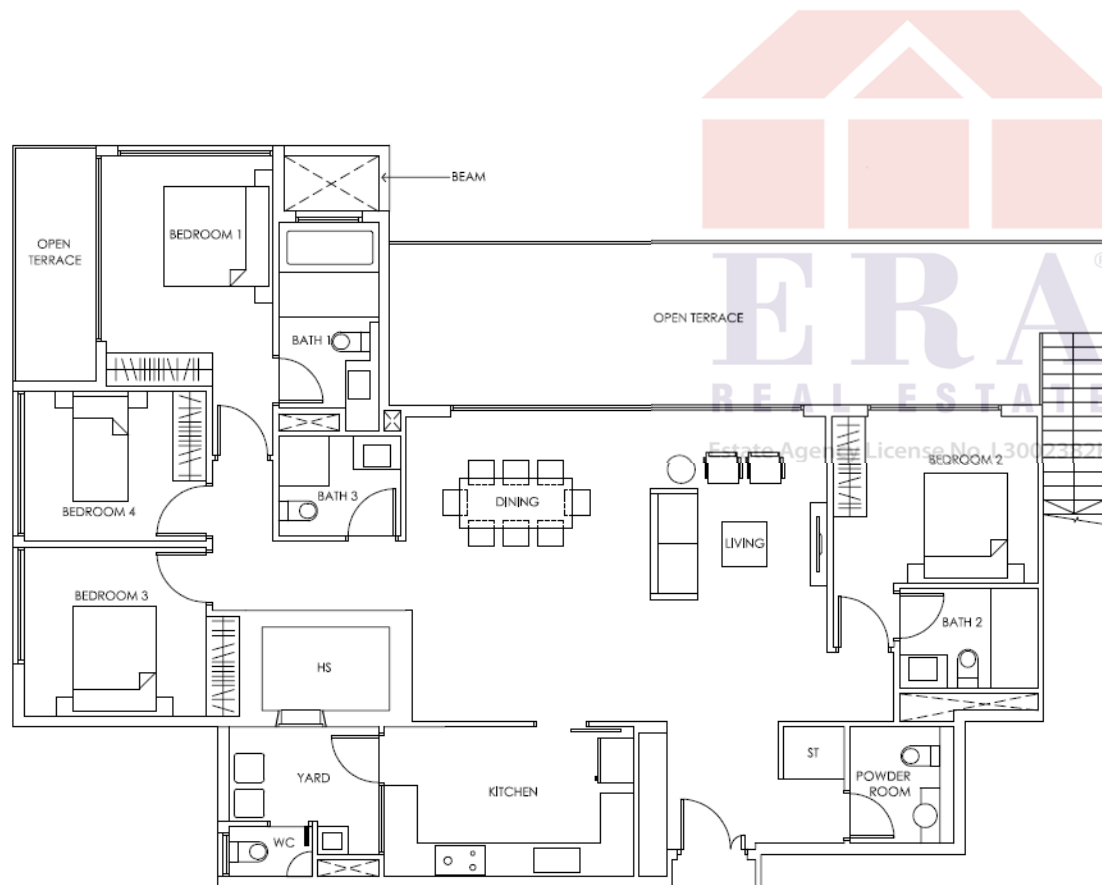


Estate Agency License No. L3002382K

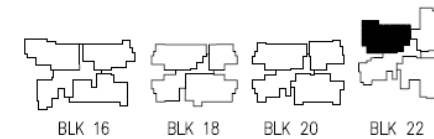
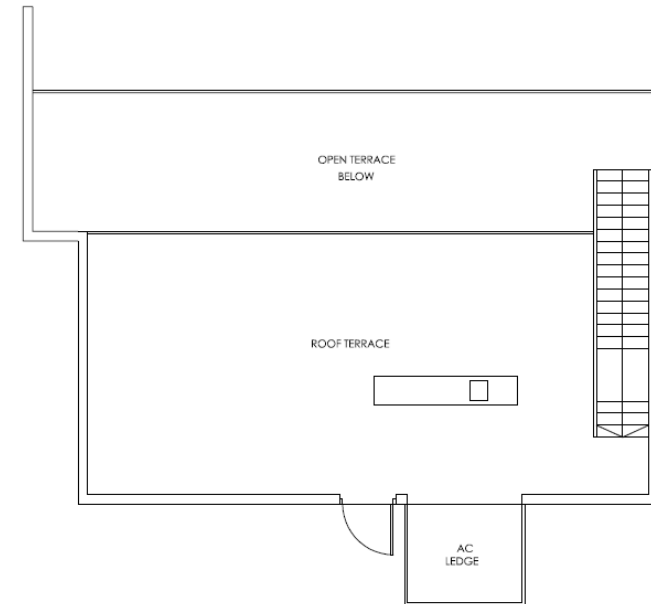


Type PH 13 278 sqm / 2992 sqf

#15-25



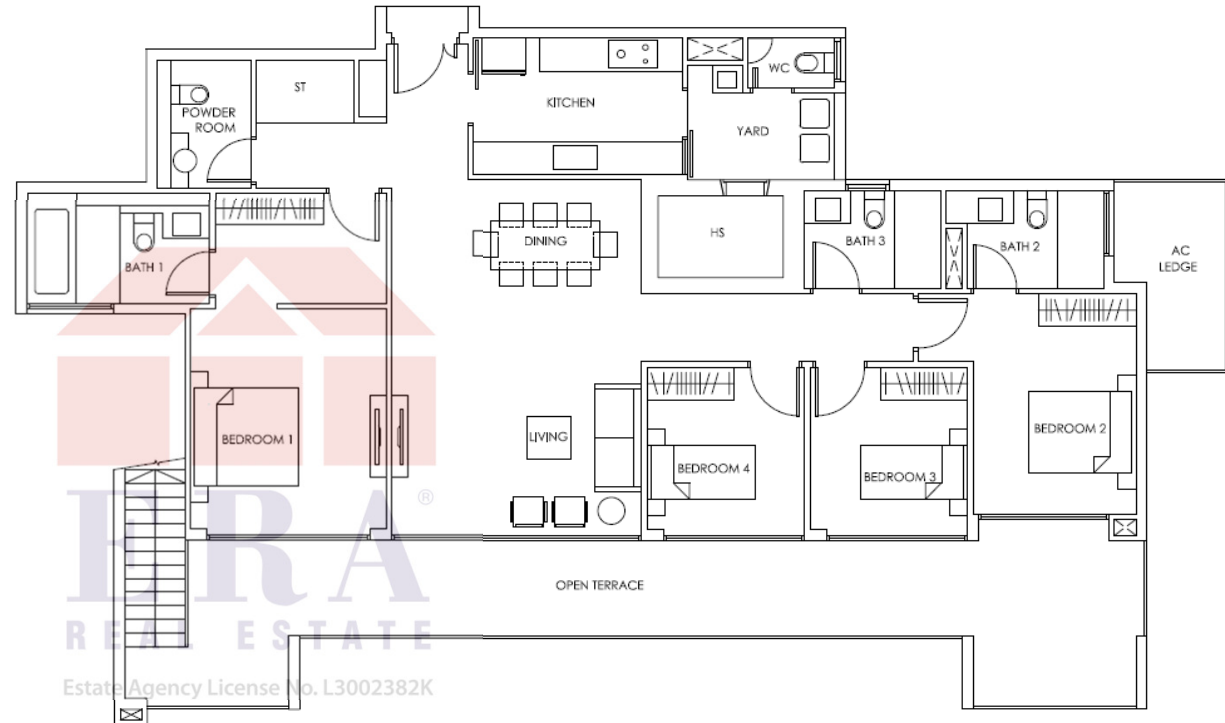
(Roof)



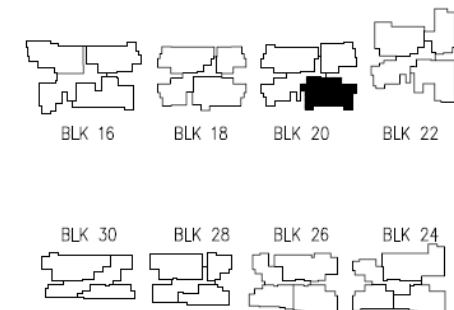
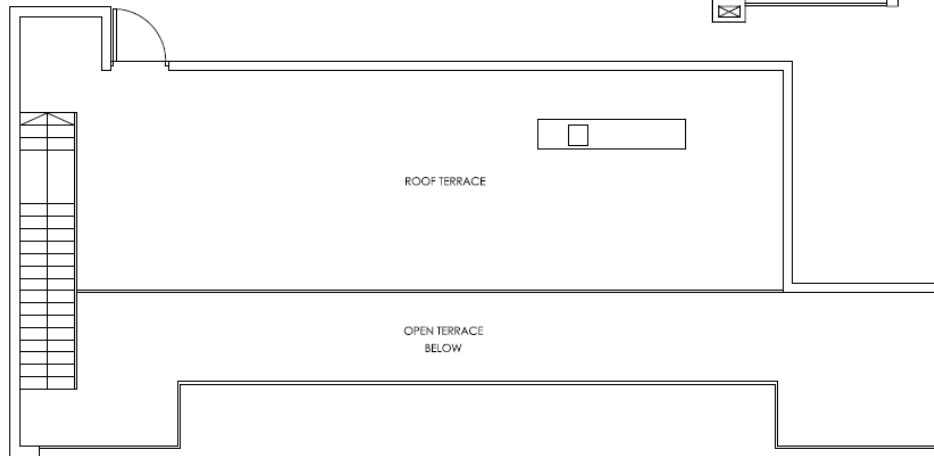
All plans are subjected to amendments as may be approved by the relevant authorities. Floor areas are approximate and subject to final survey.

Type PH 14 279 sqm / 3003 sqf

#15-15



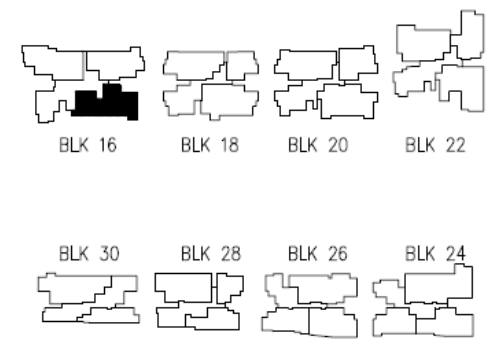
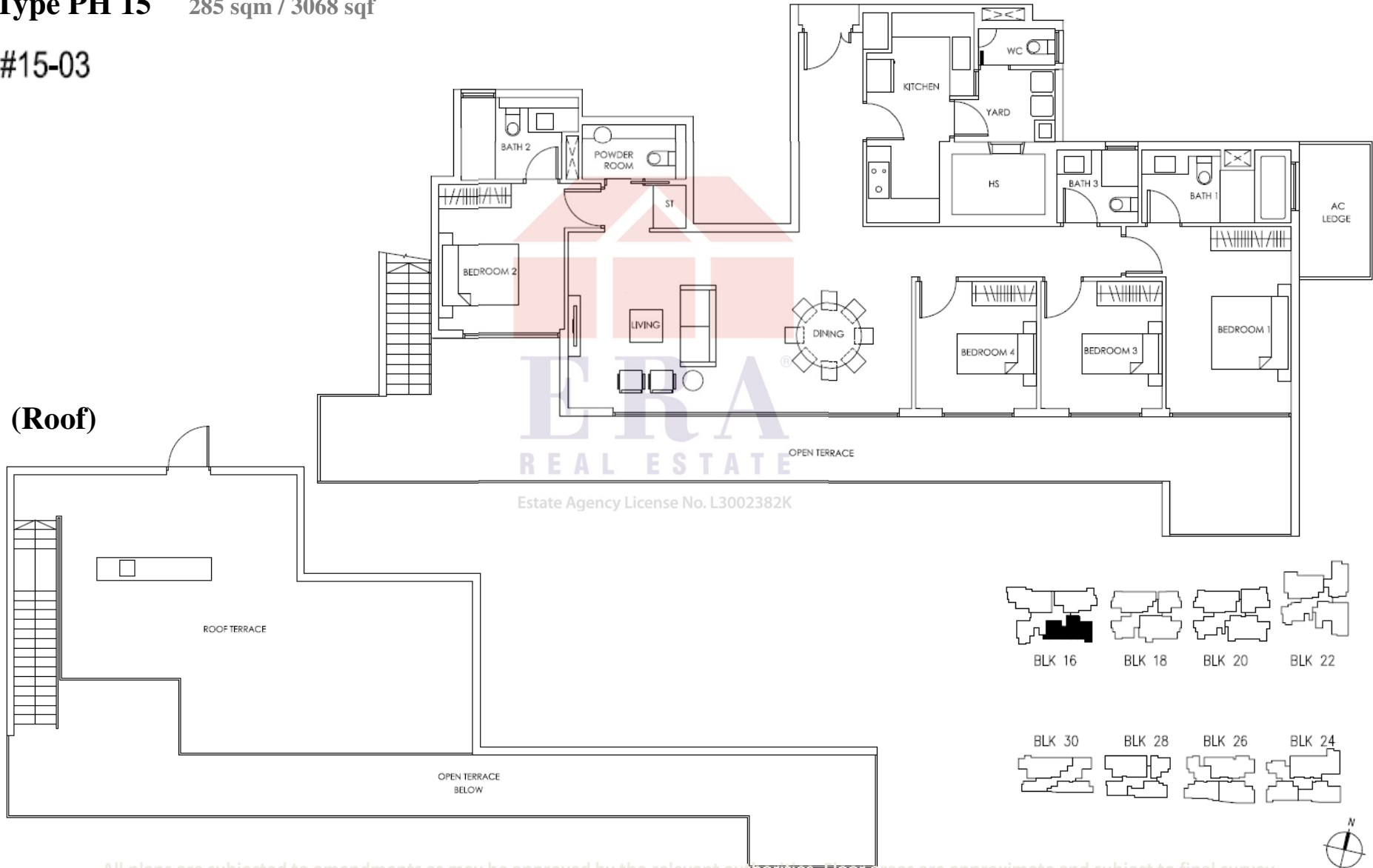
(Roof)



Penthouse 15

Type PH 15 285 sqm / 3068 sqf

#15-03

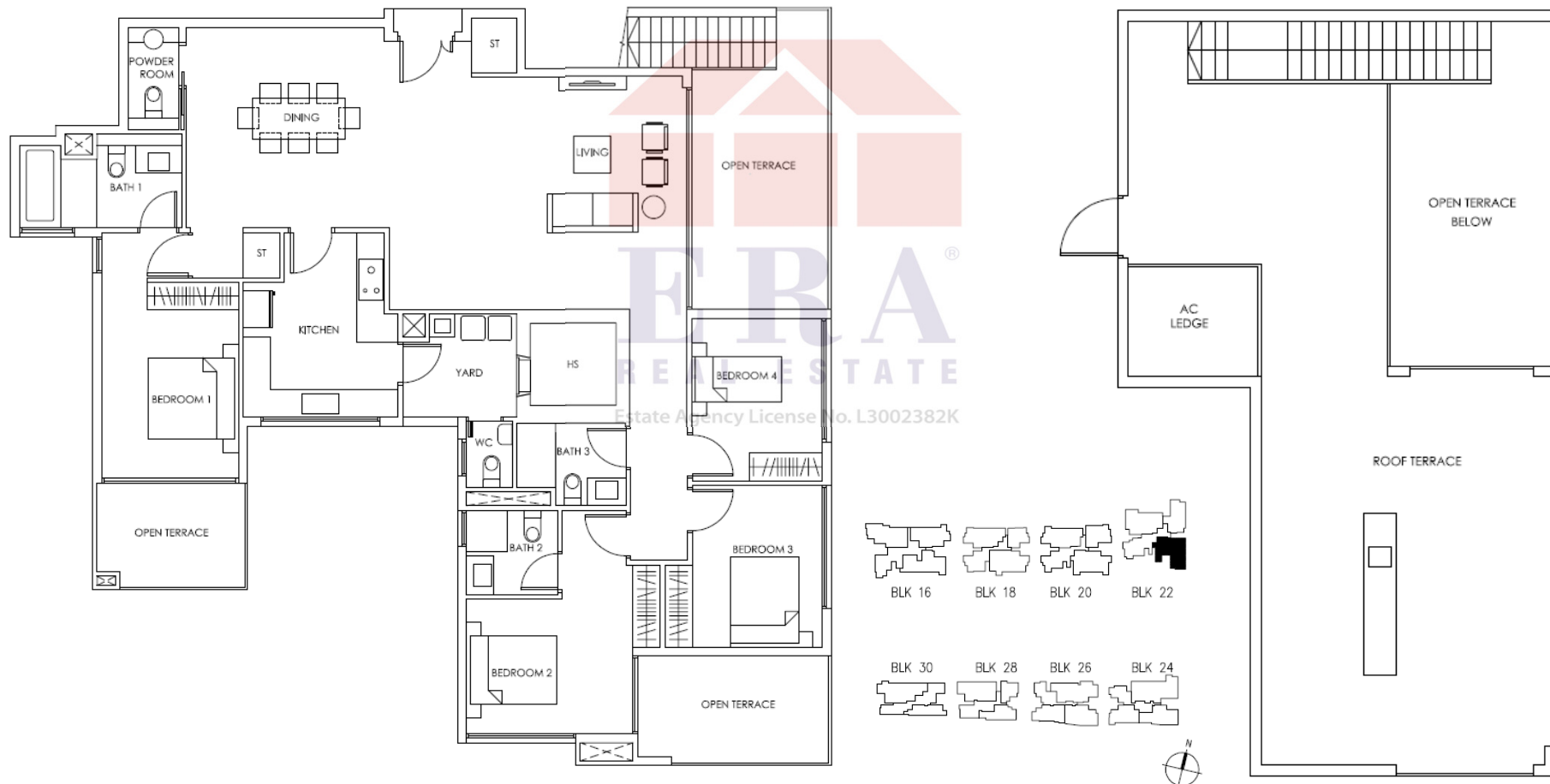


All plans are subjected to amendments as may be approved by the relevant authorities. Floor areas are approximate and subject to final survey.

Type PH 16 283 sqm / 3046 sqf

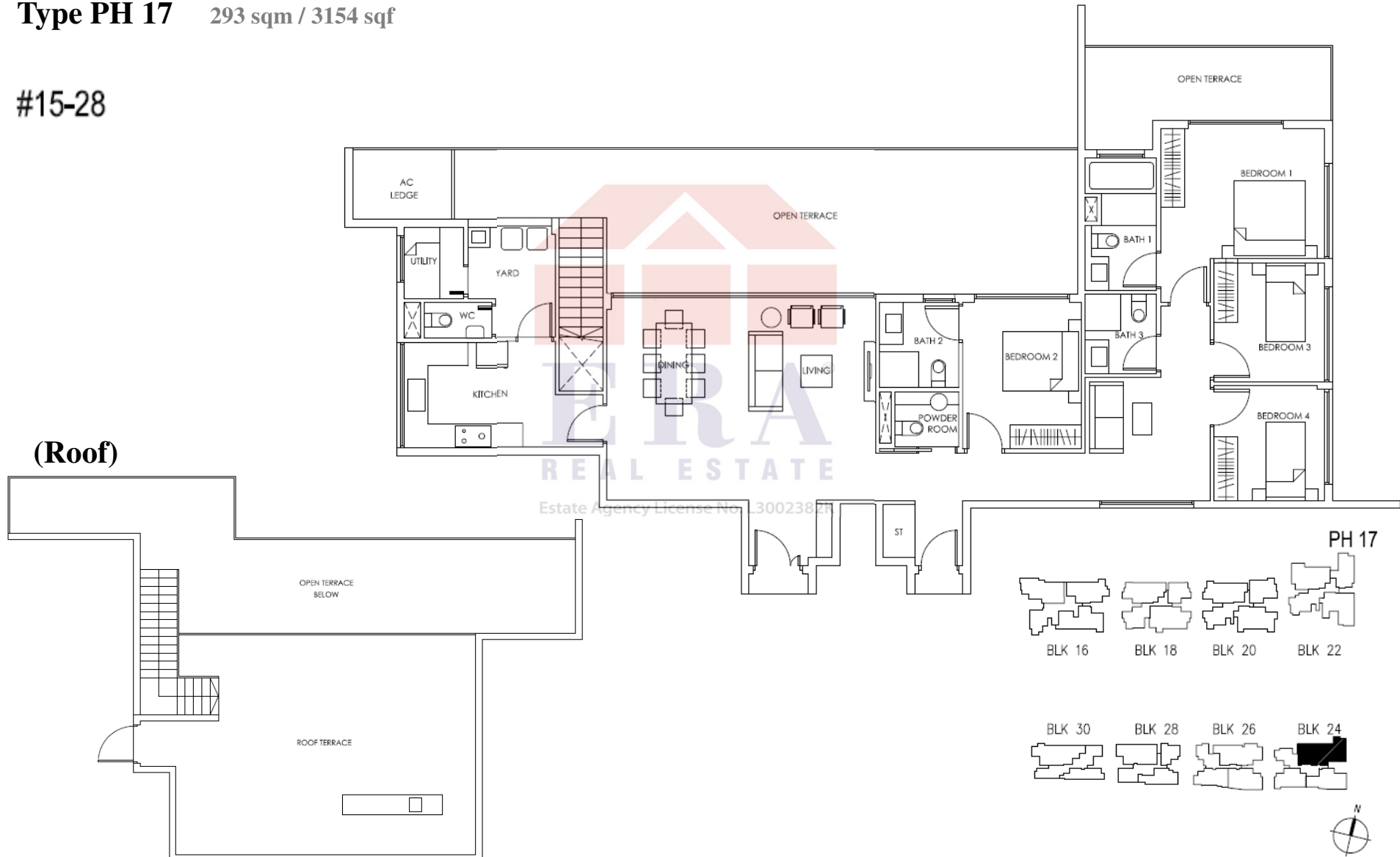
#15-21

(Roof)



Type PH 17 293 sqm / 3154 sqf

#15-28



All plans are subjected to amendments as may be approved by the relevant authorities. Floor areas are approximate and subject to final survey.